



GENETIC ENTERPRISES

WORLD CLASS GENETICS

NZ

2017



DAIRY SIRE GUIDE

SEMEN / IMPORT / EXPORT / EMBRYOS

WWW.GENETICENTERPRISES.CO.NZ

GENETIC ENTERPRISES NZ is a 100% owned and operated company bringing NZ Dairy Farmers the best of Proven and Genomic Sires from around the world.

The sires are selected for NZ Grazing conditions with a strong emphasis on Protein, Udders, Fertility & Longevity, Feet & Legs, Calving Ease and Structural Soundness. Dairy Farmers with GE Progeny comment on the superior udders and longevity of these animals.

NZ GENOMIC SIRES 2017: An exciting development is the introduction of NZ Genomic Sires from some of the leading NZ Cow Families for production and type in both the Holstein and Jersey Breeds. These bulls are currently being tested Genomically for the Australian BPI Index.

It is planned to do a release on these selected bulls in March on a special promotion.

INDEX

* (g) Genomic

HOLSTEIN-FRIESIAN PROVEN

PAGE

114866	Absolute Red.....	16
116930	Atley.....	6
116766	Bill (g).....	14
117852	Boom.....	10
114868	Boss.....	10
117859	Caloforte (g).....	23
117861	Capture (g).....	14
115923	Christmas.....	5
117854	Coltrane.....	21
116939	Conor (g).....	14
115766	Cosworth (g).....	17
114884	Cruise.....	12
116924	Cruiser (g).....	15
113780	Eject.....	20
113781	Eudon.....	19
116929	Fearsome.....	6
115763	Felino.....	16
115764	Galactico (g).....	17
117860	Garcia.....	21
116927	Geemcee.....	4
113888	Golden Dreams.....	18
115765	Judo.....	22
116932	Kingtut (g).....	7
116876	Langham (g).....	7
116941	Leopardo (g).....	17
116937	Lotta Class (g).....	13
116926	Luther (g).....	15
116875	Mainstreet (g).....	8
116940	Maximus (g).....	13
114985	Medallion.....	5
116936	Microchip (g).....	8
115762	Milo.....	11
117850	Milord.....	10
117851	Motion.....	10
117853	Mufasa.....	22
116877	Nardoo (g).....	8
116931	Pertinent (g).....	7
115773	Picola.....	4
116901	Raz (g).....	8
117855	Samite (g).....	13
115882	Scolari.....	18
116925	Shane (g).....	15
117857	Sharpe (g).....	23
115760	Supershot.....	12
113754	Twist.....	11
117856	Valverde.....	20
117858	Vanhalen (g).....	23
116928	Wrangler.....	3
116759	Zamagni.....	19

JERSEY

PAGE

316776	Ainsley (g).....	33
316777	Algernon (g).....	33
314718	Aussiegold P.....	30
316735	Baymax (g).....	32
315730	Beaumont (g).....	36
316733	Buzzbox (g).....	33
317701	Casual (g).....	31
317700	Engineer (g).....	36
309737	Larfalot.....	31
315726	Olympian (g).....	36
314730	Raceway.....	30
316719	Roundhill.....	32
316732	Seahorse (g).....	32
313710	Starbuck.....	35
314756	Tahbilk.....	29
311745	Tequila.....	34
314765	Tornado.....	35
316772	Valbone.....	34
316734	Valin (g).....	33
316716	Yegabomb (g).....	36

AYRSHIRE

504560	Danehill.....	40
516617	Famous (g).....	39
513682	Oblique.....	38
515624	Perfek.....	39
515617	Supreme (g).....	38
515618	Triclo (g).....	38
513567	Vitali (g).....	40

AUSSIE REDS

515616	Dairy Week.....	41
515562	Hilly.....	41
516694	Obama.....	41
516695	Scarebear.....	41

MILKING SHORTHORN

515613	Murdoch (g).....	42
515612	Plato (g).....	42
513680	Titan.....	42

NORMANDE

516613	Jacaranda (g).....	43
--------	--------------------	----

MILKING FLECKVIEH

515635	Rijeka.....	43
--------	-------------	----

BROWN SWISS

516587	Arrow (g).....	45
516555	Cadence.....	45
512579	Carter.....	44
516556	Get Lucky (g).....	45
515576	Richard.....	44

MONTBELIARDE

515598	Huard.....	46
516612	Jombrik (g).....	46

ITALIAN TRAIT LEADERS - HOLSTEIN FRIESIAN

PROTEIN	UDDERS	CALVING EASE	LEGS & FEET	FERTILITY
Sharpe 78 (g)	Golden Dreams 4.34	Wyman 112	Vanhallen 4.69 (g)	Malaga 115
Clash 78 (g)	Eudon 4.01	Malaga 107 (g)	Golden Dreams 4.33	Cosworth 110 (g)
Vanhallen 76 (g)	Sharpe 3.72 (g)	Calaforte 106 (g)	Bagolino 2.93	Judo 110
Eject 56	Zamagni 3.08	Garcia 106	Judo 2.68	Bagolino 110
Mufasa 55	Calaforte 3.06 (g)	Felino 104	Valverde 2.48	Scolari 109
Cosworth 55 (g)	Judo 2.83	Coltrane 104	Eject 2.30	Garcia 108
Valverde 54	Clash 2.44 (g)	Galactico 104 (g)	Eudon 2.20	Valverde 107
Zamagni 46	Malaga 2.35 (g)	Sharpe 104 (g)	Garcia 2.18	Golden Dreams 107
TYPE	SOMATIC CELLS	CAPACITY	LONGEVITY	
Eudon 3.13	Golden Dreams 112	Sharpe 4.73 (g)	Clash 118 (g)	
Vanhallen 3.04 (g)	Galactico 112 (g)	Calaforte 4.17 (g)	Calaforte 117 (g)	
Golden Dreams 2.94	Scolari 109	Mincio 3.09	Eudon 116	
Sharpe 2.91 (g)	Clash 109 (g)	Judo 2.57	Galactico 116 (g)	
Judo 2.65	Felino 108	Valverde 2.47	Scolari 115	
Calaforte 2.36 (g)	Wyman 107	Eudon 2.23	Mulligan 114	
Clash 2.31 (g)	Malaga 107 (g)	Zamagni 1.74	Malaga 114 (g)	
Zamagni 2.27	Mufasa 107	Wyman 1.5	Eject 113	
	Mulligan 106	Eject 0.62	Garcia 113	



GROUP OF SCOLARI DAUGHTERS



FLASHBACK & JENKINS DAUGHTERS

GENETICS AUSTRALIA TRAIT LEADERS - HOLSTEIN FRIESIAN

GA BPI	GA HWI	GA TWI	GA TYPE
Geemcee 306	Kingtut 232 (g)	Christmas 279	Medallion 108
Kingtut 298 (g)	Microchip 231 (g)	Wrangler 267	Christmas 108
Wrangler 287	Geemcee 203	Kingtut 267 (g)	Atley 108
Trickin 272	Wrangler 203	Trickin 258	Fearsome 107
Christmas 270	Trickin 194	Pertinent 256 (g)	Budlight 107
Pertinent 255 (g)	Nardoo 191 (g)	Geemcee 251	Jenkins 106
Microchip 252 (g)	Royal Pic 183 (g)	Mainstreet 222 (g)	Mainstreet 106 (g)
Nardoo 235 (g)	Pertinent 176 (g)	Fearsome 222(g)	Darnet 106
GA UDDERS	GA PROTEIN	GA CALV/EASE	GA F & L
Medallion 113	Deancox 32	Wrangler 103	Christmas 108
Jenkins 112	Flashback 30	Geemcee 103	Useage 105
Mainstreet 110 (g)	Geemcee 26	Trickin 103	Mainstreet 101 (g)
Darnet 110	Useage 26	Vizabull 102	Langham 101 (g)
Picola 109	Darnet 25	Buddha 102	Flashback 101
Langham 109 (g)	Christmas 25	Useage 102	Buddha 101
Atley 109	Mainstreet 24 (g)	Eurostar 102	Langham 101
Eurostar 110	Royal Pic 23 (g)	Medallion 101	Atley 100
GA SCC	GA Body Depth	GA Survival	GA FERTILITY
Flashback 161	Medallion 108	Kingtut 110 (g)	Kingtut 112 (g)
Microchip 157 (g)	Jenkins 107	Atley 108	Langham 110 (g)
Vizabull 152 (g)	Darnet 107	Langham 108 (g)	Trickin 110
Nardoo 152 (g)	Christmas 106	Microchip 106 (g)	Microchip 109 (g)
Kingtut 148 (g)	Fearsome 104	Flashback 106	Geemcee 108
Buddha 147	Pertinent 104 (g)	Wrangler 106	Eurostar 108
Picolo 146	Budlight 104	Nardoo 106 (g)	Raz 108 (g)
Pertinent 145 (g)	Mainstreet 103(g)	Raz 106 (g)	Budlight 107
Raz 143 (g)	Vizabull 103 (g)	Trickin 106	Wrangler 106

GENETICS AUSTRALIA



Australian Genetics are excelling under our NZ Grazing conditions. We have had growing use of the GA Sires because of their Structural Soundness, Great Udders and Temperament. They out produce their herd mates and they are very easy to rear.

Jersey's are excelling and with the advantage of the Poll Gene in Aussie Gold are extremely popular. Their moderately framed Holstein Friesians are also gaining in use through being a strong outcross to present NZ Genetics. Aussie Red's are becoming very popular in "Three Way Crossing".

The Australian Indexing System is geared for the farmer's preference in Sire Selection. – refer to BPI explanation on page 9.

PACK SELECTION Applies to Genetics Australia bulls only

Genetic Enterprises/G.A.Packs (Equal numbers per bull) (Genetics Australia bulls only apply to these packs)	Straws 100-249	Straws 250-499	Straws 500-999	Straws 1000+
Select a minimum of 4 from these Holstein Sires	\$20.00	\$18.00	\$17.00	\$15.00
Medallion				
Christmas				
Geemcee				
Fearsome				
Picola				
Atley				
Microchip				
Kingtut				
Raz				
Nardoo				
Select a minimum of 4 from these Jersey Sires	\$20.00	\$18.00	\$17.00	\$15.00
Aussiegold				
Raceway				
Tahbilk				
Levigenes				
Valin				
Ainsley				
Seahorse				
Algernon				
Across Breeds pack (Select 4 bulls / 2 breeds)	\$20.00	\$18.00	\$17.00	\$15.00
Select 4 bulls, two breeds, equal numbers from packs shown				
Select a minimum of 2 Budget Holstein	\$14.00	\$12.00	\$10.00	\$8.00
Buddha				
Trickin				
Darnet				
Eurostar				
Jenkins				
Budlight				
Select a minimum of 2 Budget Jersey	\$14.00	\$12.00	\$10.00	\$8.00
Larfalot				
Roundhill				
Buzzbox				
Coleman				
Vicks				
Huxley				
2 + Aussie Red sires	\$14.00	\$12.00	\$10.00	\$8.00
Bonjovi				
Dairyweek				
Hilly				
Scarebear				
Obama				

WRANGLER Rengaw Manoman Wrangler - ET

07/01/2011

Sire: Man-O-Man

Dam: Rengaw Shottle Janea -ET VG88

MGS: Shottle

aAa: 423561

116928

\$28

Genetics
AUSTRALIA

A1A1



SEXED SEMEN
\$POA

BPI ^{76%}	HWI ^{69%}	TWI ^{76%}
287	203	267

PROTEIN ^{KG}	PROTEIN [%]	FAT ^{KG}	FAT [%]
19	0.37	40	0.58
MILK ^{ltr}	RELIABILITY [%]	DTRS	HERDS
-8	89%	47	26

COMPOSITES	DAIRY STRENGTH
Overall Type	105
Mammary System	104
MAMMARY TRAITS	
Udder Texture	107
Udder Depth	107
Fore Attach	97
Rear Att Height	100
Rear Att Width	102
Cent Ligament	108
Teat Place Front	104
Teat Place Rear	102
Teat Length	99
	RUMP
	Pin Width
	Pin Set
	Loin Strength
	FEET & LEGS
	Foot Angle
	Rear Leg Set
	Rear Leg Rear View

44 DTRS | 20 HERDS | 76% REL



HEALTH & FITNESS

DTRS 67 HERDS 32 REL 15%

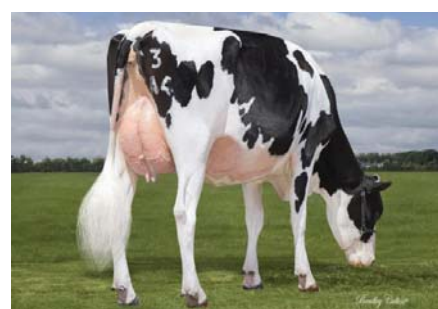
SURVIVAL	106
CALVING EASE	103
CELL COUNT	136
DAUGHTER FERT	106
MILKING SPEED	100
TEMPERAMENT	102
LIKEABILITY	102



BPI
Components
Fertility
Udders
SCS



WRANGLER MANOMAN



WRANGLER DAUGHTERS

GEEMCEE

Rengaw Hummer

07/01/2011

Sire: Man-O-Man

Dam: Rengaw Shottle Janea -ET VG88

MGS: Shottle

aAa: 432561

**TOP 5 BPI
 BULL IN
 AUSTRALIA**

BPI77%

HWI70

TWI76%

306

203

251



GEEMCEE DAUGHTER

41 DTRS | 21 HERDS | 76% REL | AUGUST 2016

PROTEIN _{KG}	PROTEIN%	FAT _{KG}	FAT%
26	0.36	54	0.63
MILK _{ltr}	RELIABILITY%	DTRS	HERDS
251	90%	49	23



HEALTH & FITNESS

SURVIVAL	103
CALVING EASE	103
CELL COUNT	137
DAUGHTER FERT	108
MILKING SPEED	101
TEMPERAMENT	103
LIKEABILITY	103
STATURE	100

69 DTRS | 34 HERDS | 15% REL

MAMMARY TRAITS

Udder Texture	111
Rear Att Width	101
Cent Ligament	107
Teat Place Front	103
Teat Place Rear	106
Overall Type	100
Mammary System	102



GEEMCEE BULL


 BPI/TWI
 Udders
 Longevity
 Components
 Fertility
 Med Stature
 SCS

PICOLA

Adlejama Delsanto Picola


 SEXED SEMEN
 \$POA

17/04/2012

Sire: Manna Farm Del Santo

Dam: Pardee Planet R Perfection 2 -ET VG85

MGS: Planet

aAa: 135246

BPI83%

HWI76%

TW84%

211

154

180



PICOLA DAUGHTER

109 DTRS | 23 HERDS | 87% REL | AUGUST 2016

PROTEIN _{KG}	PROTEIN%	FAT _{KG}	FAT%
13	0.19	44	0.57
MILK _{ltr}	RELIABILITY%	DTRS	HERDS
116	98%	403	72



HEALTH & FITNESS

SURVIVAL	102
CALVING EASE	98
CELL COUNT	146
DAUGHTER FERT	100
MILKING SPEED	103
TEMPERAMENT	102
LIKEABILITY	104
STATURE	101

81 DTRS | 92 HERDS | 19% REL

MAMMARY TRAITS

Udder Texture	107
Rear Att Height	107
Rear Att Width	104
Cent Ligament	105
Teat Place Rear	105
Overall Type	101
Mammary System	104



PICOLA BULL


 BPI
 Udders
 Type
 Components
 Fertility
 Med Stature
 SCS

CHRISTMAS

Emu Banks Christmas-Et



21/12/2008

Sire: Roumare

Dam: Barkly Gold Christy VG 89

MGS: GoldBullion

aAa: 435261

 BPI_{82%}

 HWI_{75%}

 TWI_{82%}

270

165

279



CHRISTMAS DAUGHTER

65 DTRS | 19 HERDS | 81% REL | AUGUST 2016

PROTEIN _{KG}	PROTEIN%	FAT _{KG}	FAT%
25	0.26	58	0.58
MILK _{ltr}	RELIABILITY%	DTRS	HERDS
419	95%	100	33



HEALTH & FITNESS

SURVIVAL	103
CALVING EASE	100
CELL COUNT	117
DAUGHTER FERT	101
MILKING SPEED	102
TEMPERAMENT	101
LIKEABILITY	101
STATURE	103

74 DTRS | 50 HERDS | 24% REL

MAMMARY TRAITS

Udder Texture	104
Fore Attach	102
Rear Att Width	107
Cent Ligament	101
Teat Length	99
Overall Type	108
Mammary System	101



CHRISTMAS BULL


 BPI
 Components
 Capacity
 Milking Speed
 SCS

MEDALLION

Bundalong Marks Medallion



08/07/2005

Sire: Hill Valley Basar Acme

Dam: Bundalong Knockout Luck VG87

MGS: Knockout

aAa: 513462

 BPI_{93%}

 HWI_{87%}

 TWI_{93%}

148

125

197



MEDALLION DAUGHTER

1562 DTRS | 379 HERDS | 99% REL | AUGUST 2016

PROTEIN _{KG}	PROTEIN%	FAT _{KG}	FAT%
13	0.18	1	-0.06
MILK _{ltr}	RELIABILITY%	DTRS	HERDS
125	99%	7281	706



HEALTH & FITNESS

SURVIVAL	104
CALVING EASE	101
CELL COUNT	86
DAUGHTER FERT	102
MILKING SPEED	102
TEMPERAMENT	103
LIKEABILITY	103
STATURE	98

99 DTRS | 2696 HERDS | 342% REL

MAMMARY TRAITS

Fore Attach	108
Rear Att Height	1151
Rear Att Width	111
Cent Ligament	106
Teat Place Rear	101
Overall Type	108
Mammary System	113



MEDALLION BULL


 Udders
 Reliability
 Capacity
 Milking Speed
 Temperament

ATLEY

Kaarmona Atley

26/04/2012

Sire: Maple-Downs-I G W Atwood

Dam: Kaarmona Marion Carly -ET Ex90-1E

MGS: Marion

aAa: 423165


SEXED SEMEN
\$POA


OUTCROSS

BPI84%

171

HWI76%

155

TWI84%

204



ATLEY DAUGHTER

104 DTRS | 29 HERDS | 87% REL | AUGUST 2016

PROTEINKG	PROTEIN%	FATKG	FAT%
16	-0.25	38	-0.10
MILKltr	RELIABILITY%	DTRS	HERDS
1068	99%	447	96



HEALTH & FITNESS

SURVIVAL	108
CALVING EASE	99
CELL COUNT	131
DAUGHTER FERT	102
MILKING SPEED	104
TEMPERAMENT	103
LIKEABILITY	104
STATURE	111

80 DTRS | 89 HERDS | 18% REL

MAMMARY TRAITS

Udder Texture	108
Rear Att Height	105
Cent Ligament	109
Teat Place Front	102
Teat Place Rear	104
Overall Type	108
Mammary System	109



ATLEY BULL


Type
Udders
Fertility
Milking Speed
Temperament

FEARSOME

Kandes

12/02/2012

Sire: Inverwood Informer Formost

Dam: Kaarmona Shottle Carly-ET Ex-90-1E

MGS: Shottle



OUTCROSS

BPI75%

196

HWI66%

156

TWI72%

222



FEARSOME DAUGHTER

14 DTRS | 8 HERDS | 61% REL | AUGUST 2016

PROTEINKG	PROTEIN%	FATKG	FAT%
14	0.24	20	0.26
MILKltr	RELIABILITY%	DTRS	HERDS
48	92%	69	26



HEALTH & FITNESS

SURVIVAL	102
CALVING EASE	100
CELL COUNT	136
DAUGHTER FERT	102
MILKING SPEED	98
TEMPERAMENT	103
LIKEABILITY	102
STATURE	100

67 DTRS | 15 HERDS | 8% REL

MAMMARY TRAITS

Fore Attachment	104
Rear Att Width	108
Teat Place Front	106
Teat Place Rear	96
Overall Type	107
Mammary System	105



FEARSOME DTR


Type
Med Stature
Longevity
Udders
SCS

PERTINENT Carenda

09/04/2015

Sire: Adlejama Delsanto Picola
Dam: Carenda Palermo Floosie GP84
MGS: Palermo
aAa: 35246

0 DTRS | 0 HERDS | 56 REL% | AUGUST 2016

PROT _{kg}	PROT%	FAT _{kg}	FAT%
14	0.23	46	0.62
MILK _{kg}	REL%	DTRS	HERDS
76	78%	0	0

TYPE	
OVERALL TYPE	104
UDDER OVERALL	107
REAR ATT. HEIGHT	105
TEAT PLACEMENT FRONT	103
TEAT PLACEMENT REAR	104
TEAT LENGTH	102
STATURE	107



HEALTH & FITNESS

SURVIVAL	105
CALVING EASE	100
CELL COUNT	145
DAUGHTER FERTILITY	103
MILKING SPEED	102
TEMPERAMENT	103
LIKEABILITY	103

64 DTRS | 0 HERDS | 0% REL



BPI/TWI
Udders
Components
Fertility
SCS



OUTCROSS

116931

\$26

Genomic Sire

A2A2

BPI ^{64%}	HWI ^{57%}	TWI ^{63%}
255	176	256



PERTINENT BULL

KINGTUT Rengaw Redmaw

06/08/2015

Sire: Morningview Mcc Kingboy ET
Dam: Rengaw Sunplan Jazz-ET VG85
MGS: Planman

0 DTRS | 0 HERDS | 51 REL% | AUGUST 2016

PROT _{kg}	PROT%	FAT _{kg}	FAT%
19	0.06	46	0.30
MILK _{kg}	REL%	DTRS	HERDS
582	76%	0	0

TYPE	
OVERALL TYPE	102
UDDER OVERALL	105
REAR ATT. HEIGHT	104
TEAT PLACEMENT FRONT	106
TEAT PLACEMENT REAR	102
TEAT LENGTH	96
STATURE	104



HEALTH & FITNESS

SURVIVAL	110
CALVING EASE	99
CELL COUNT	148
DAUGHTER FERTILITY	112
MILKING SPEED	99
TEMPERAMENT	101
LIKEABILITY	102

59 DTRS | 0 HERDS | 0% REL



No I Genomic Longevity
BPI Fertility
Udders SCS

OUTCROSS

Genomic Sire

Can be included
in a pack

A2A2

BPI ^{62%}	HWI ^{55%}	TWI ^{60%}
298	232	267



KINGTUT BULL

LANGHAM Ebony Park McCuthen Tony ET

30/01/2014

Sire: De-Su Bkm McCuthen
Dam: Ebony Park Iota Toni-ET VG85
MGS: Iota

0 DTRS | 0 HERDS | 54 REL% | AUGUST 2016

PROT _{kg}	PROT%	FAT _{kg}	FAT%
11	0.10	33	0.34
MILK _{kg}	REL%	DTRS	HERDS
208	75%	0	0

TYPE	
OVERALL TYPE	104
UDDER OVERALL	109
REAR ATT. HEIGHT	109
TEAT PLACEMENT FRONT	106
TEAT PLACEMENT REAR	100
TEAT LENGTH	100
STATURE	108



HEALTH & FITNESS

SURVIVAL	108
CALVING EASE	100
CELL COUNT	137
DAUGHTER FERTILITY	110
MILKING SPEED	101
TEMPERAMENT	101
LIKEABILITY	103

60 DTRS | 0 HERDS | 0% REL



BPI/TWI
Udders
Fertility
Health Traits
SCS



OUTCROSS

116876

\$22

Genomic Sire

A2A2

BPI ^{62%}	HWI ^{56%}	TWI ^{61%}
214	161	216



LANGHAM BULL

Hindlea MICROCHIP

05/08/2014

Sire: Adlejama Delsanto Picola
Dam: Hindlee Goldchip Ordream 12074 Vg 87
MGS: Goldchip
aAa: 234165

0 DTRS | 0 HERDS | 56 REL% | AUGUST 2016

PROT _{kg}	PROT%	FAT _{kg}	FAT%
11	0.04	39	0.37
MILK _{kg}	REL%	DTRS	HERDS
330	78%	0	0

TYPE	
OVERALL TYPE	102
UDDER OVERALL	104
REAR ATTACHMENT HEIGHT	108
TEAT PLACEMENT FRONT	103
TEAT PLACEMENT REAR	100
TEAT LENGTH	104
STATURE	98

Genomic Sire

Genetocs
AUSTRALIA

116936

\$20

Can be included
in a pack

A2A2

BPI ^{64%}	HWI ^{58%}	TWI ^{63%}
252	231	220



HEALTH & FITNESS

SURVIVAL	106
CALVING EASE	98
CELL COUNT	157
DAUGHTER FERTILITY	109
MILKING SPEED	102
TEMPERAMENT	102
LIKEABILITY	103

64 DTRS | 0 HERDS | 0% REL



MICROCHIP BULL

RAZ Carenda Josuper 470

21/05/2015

Sire: JoSuper
Dam: Carenda Roumare Fondue-ET VG85
MGS: Roumare

0 DTRS | 0 HERDS | 50 REL% | AUGUST 2016

PROT _{kg}	PROT%	FAT _{kg}	FAT%
22	-0.05	34	-0.07
MILK _{kg}	REL%	DTRS	HERDS
918	75%	0	0

TYPE	
OVERALL TYPE	105
UDDER OVERALL	108
REAR ATTACHMENT HEIGHT	106
TEAT PLACEMENT FRONT	106
TEAT PLACEMENT REAR	104
TEAT LENGTH	99
STATURE	103

Genomic Sire

Genetocs
AUSTRALIA

116901

\$20

Can be included
in a pack

A2A2

BPI ^{60%}	HWI ^{54%}	TWI ^{59%}
224	176	222



HEALTH & FITNESS

SURVIVAL	106
CALVING EASE	100
CELL COUNT	143
DAUGHTER FERTILITY	108
MILKING SPEED	103
TEMPERAMENT	103
LIKEABILITY	103

60 DTRS | 0 HERDS | 0% REL



RAZ BULL

Hill valley Ss NARDOO

22/04/2013

Sire: Seagull Bay Supersire ET
Dam: Hill Valley Planet Noni VG 87
MGS: Planet
aAa: 342516

0 DTRS | 0 HERDS | 50 REL% | AUGUST 2016

PROT _{kg}	PROT%	FAT _{kg}	FAT%
22	-0.05	34	-0.07
MILK _{kg}	REL%	DTRS	HERDS
918	75%	0	0

TYPE	
OVERALL TYPE	101
UDDER OVERALL	102
REAR ATTACHMENT HEIGHT	100
TEAT PLACEMENT FRONT	103
TEAT PLACEMENT REAR	100
TEAT LENGTH	95
STATURE	100

Genomic Sire

Genetocs
AUSTRALIA

116877

\$20

Can be included
in a pack

A2A2

BPI ^{66%}	HWI ^{59%}	TWI ^{64%}
235	191	214



HEALTH & FITNESS

SURVIVAL	106
CALVING EASE	99
CELL COUNT	152
DAUGHTER FERTILITY	103
MILKING SPEED	99
TEMPERAMENT	103
LIKEABILITY	103

66 DTRS | 0 HERDS | 0% REL



NARDOO BULL

Glomar Wallstreet MAINSTREET

24/05/2013

Sire: Amighetti Numero Uno
Dam: Glomar Roumare Lady 4100 VG89
MGS: Roumare
aAa: 234156

0 DTRS | 0 HERDS | 58 REL% | AUGUST 2016

PROT _{kg}	PROT%	FAT _{kg}	FAT%
24	0.04	39	0.06
MILK _{kg}	REL%	DTRS	HERDS
809	78%	0	0

TYPE	
OVERALL TYPE	106
UDDER OVERALL	110
REAR ATTACHMENT HEIGHT	110
TEAT PLACEMENT FRONT	109
TEAT PLACEMENT REAR	102
TEAT LENGTH	104
STATURE	105

Genomic Sire

Genetocs
AUSTRALIA

116875

\$22

Genomic Sire

A2A2

BPI ^{66%}	HWI ^{59%}	TWI ^{64%}
216	212	222



HEALTH & FITNESS

SURVIVAL	104
CALVING EASE	96
CELL COUNT	129
DAUGHTER FERTILITY	104
MILKING SPEED	102
TEMPERAMENT	101
LIKEABILITY	102

64 DTRS | 0 HERDS | 0% REL



MAINSTREET BULL

HOW TO READ AN AUSTRALIAN BULL PROOF – a brief explanation of;

BPI – Balanced Performance Index – A blend of Production, Type and health traits for maximum profit

HWI – Health Weighted Index – Farmers can fast track traits such as Fertility, Mastitis resistance & feed efficiency.

TWI – Type weighted index – Farmers can make greater progress for type whilst still maintaining emphasis on production & health

Production ABV – Based on an annual rolling base & represents the average cow currently milking in Australia. The reliability figure is an estimate of the potential proof changed, based on number of daughters, herds, test days & genomic data.

Australian ASI – Like the BPI, the ASI is expressed in dollar value. This production based index is weighted using a similar ratio of milk: fat: protein to what most Australian dairy farmers are paid for their milk.

For more details, please visit the official Australian ADHIS website where full explanations are available: www.adhis.com.au

GENOMIC SIRES - why you should include some Genomic sires in your AI program:

- Speed up Genomic progress in your herd
- Get Outcross Genetics
- Bulls are graduating with their predicted indicators or better

It is indeed **EXCITING TIMES** for Genetic Enterprises as we see the following sires go on to graduate as proven bulls having been sold in NZ as Genomic sires. They are now amongst the top indexing bulls for their countries.

From OHG Genetics Germany: **114868 KNS BOSS**



From Cogent UK: **114884 WILTOR CRUISE EX92**



From Semenzoo Italy: **113781 GO-FARM ROYAL EUDON, 113780 ZIAL MILLION EJECT & 115765 CASTELBOSCO INS.JUDO**



GO-FARM ROYAL EUDON



ZIAL MILLION EJECT



CASTELBOSCO INS JUDO

KNS BOSS

17/02/2012

Sire: Bookem
Dam: KNS Rendezvous
aAa: 432516

892 DTRS | 452 HERDS | 99 REL% | DEC. 2016

PROT _{kg}	PROT%	FAT _{kg}	FAT%
295	3.45	338	3.95
MILK _{kg}	RZM		
8570	135		

TYPE	
OVERALL TYPE	109
UDDER OVERALL	112
REAR UDDER	120
TEAT PLACEMENT FRONT	117
TEAT PLACEMENT REAR	128
TEAT LENGTH	104
STATURE	109

Reduced
to \$25
for order
of 50 or
more



114868

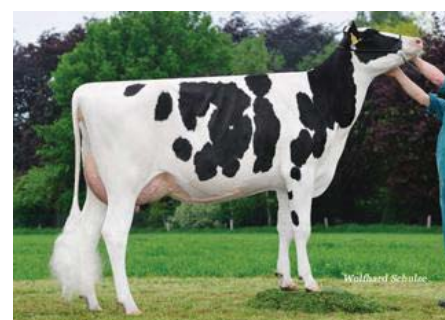
\$28



HEALTH & FITNESS

LONGEVITY	114
CALVING EASE	102
CELL COUNT	106
DAUGHTER FERTILITY	113
MILKABILITY	95

445 DTRS | 237 HERDS | 96% REL



BOSS DAUGHTER KAMELA

FWS BOOM

31/01/2012

Sire: Bookem
Dam: FWS Whitney
aAa: 423156

284 DTRS | 158 HERDS | 97 REL% | DEC. 2016

PROT _{kg}	PROT%	FAT _{kg}	FAT%
314	3.31	362	3.82
MILK _{kg}	RZM		
9479	138		

TYPE	
OVERALL TYPE	119
UDDER OVERALL	123
REAR UDDER	129
TEAT PLACEMENT FRONT	123
TEAT PLACEMENT REAR	129
TEAT LENGTH	89
STATURE	110



HEALTH & FITNESS

LONGEVITY	121
CALVING EASE	114
CELL COUNT	113
DAUGHTER FERTILITY	110
MILKABILITY	105

201 DTRS | 123 HERDS | 91% REL



BOOM DAUGHTER WKM EMILIA

MOTION

13/10/2011

Sire: Mowambo
Dam: OH Wilsa
aAa: 315426

327 DTRS | 181 HERDS | 97 REL% | DEC. 2016

PROT _{kg}	PROT%	FAT _{kg}	FAT%
299	3.29	344	3.78
MILK _{kg}	RZM		
9094	120		

TYPE	
OVERALL TYPE	100
UDDER OVERALL	113
REAR UDDER	116
TEAT PLACEMENT FRONT	89
TEAT PLACEMENT REAR	84
TEAT LENGTH	117
STATURE	111

Reduced
to \$25
for order
of 50 or
more



117851

\$28

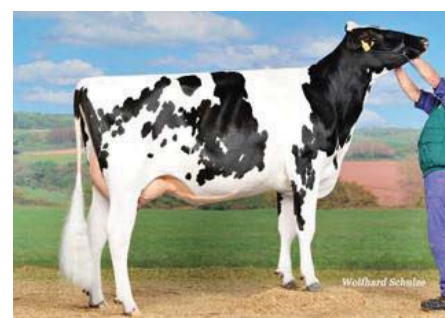
A2A2



HEALTH & FITNESS

LONGEVITY	134
CALVING EASE	95
CELL COUNT	116
DAUGHTER FERTILITY	120
MILKABILITY	105

255 DTRS | 144 HERDS | 92% REL



MOTION DAUGHTER EMOTION

MILORD

18/05/2015

Sire: Missouri
Dam: Ladys-Manor Hdlr Shastee
MGS: Ladys-Manor M Ruby D Shay
aAa: 135426

0 DTRS | 0 HERDS | 58 REL% | AUGUST 2016

PROT _{kg}	PROT%	FAT _{kg}	FAT%
58	0.12	369	0.15
MILK _{kg}	gRZM	DTRS	HERDS
1349	143	0	0

TYPE	
OVERALL TYPE	106
UDDER OVERALL	137
REAR UDDER	126
TEAT PLACEMENT FRONT	112
TEAT PLACEMENT REAR	111
TEAT LENGTH	114
STATURE	112

Reduced
to \$25
for order
of 50 or
more



117850

\$28

Genomic Sire

A2A2



HEALTH & FITNESS

MILKABILITY	112
CALVING EASE	112
CELL COUNT	106
DAUGHTER FERTILITY	109
MILKABILITY	105

0 HERDS | 71% REL



MILORD DAM LADYS-MANOR HDLR SHASTEE



115762

\$20

A2A2

Reduced to \$18 for order of 50 or more

Wintersell **MILO** EX92

Oman x Goldwyn x Ford

18/05/2009

Dam: Wintersell Mila 10 EX93(3)

2nd Dam: Wintersell Mila 6 EX94(6)

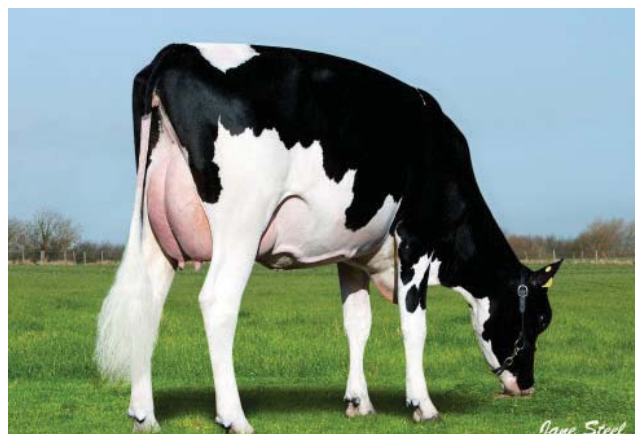
aAa: 513624

AUSTRALIAN PROOF

SEXED SEMEN
\$POA

OUTCROSS

BPI75%	HWI69%	TWI74%
224	213	207



GRANGECROFT MILO MOONGLOW

PRODUCTION 224 DTRS | 93 HERDS | DECEMBER 2016 | SOURCE UK

MILK _{kg}	FAT _{kg}	FAT%
157	21.3	0.19
PROT _{kg}	PROT%	REL%
8.7	0.05	97

	-2	-1	0	+1	+2	
UK Type Merit					1.32	EXCELLENT
Mammary					1.40	EXCELLENT
UK Feet & Legs					0.60	EXCELLENT
Stature					-0.59	160 CM
Body Depth					-0.37	DEEP
Rump Angle					0.58	LOW PINS
Rump Width					-0.67	WIDE
Foot Angle					2.32	STEEP
Fore Udder Attach					0.59	TIGHT
Rear Udder Height					1.13	VERY HIGH
Udder Support					1.22	STRONG
Udder Depth					0.87	20CM ABOVE
Front Teat Placement					-0.07	CLOSE
Teat Length					0.23	LONG
Locomotion					0.94	EXCELLENT

111 DTRS | 60 HERDS | 90% REL



HEALTH & FITNESS

FERTILITY INDEX	10.60	HIGH
LIFESPAN	0.30	HIGH
CALVING EASE	1.2	VERY EASY
MILKING SPEED	1.06	VERY EASY
TEMPERAMENT	0.38	GOOD
SOMATIC CELL	-20	IMPROVER
CONDITION SCORE	0.98	HIGH

Calving Ease
Longevity
Fertility
Rump
Locomotion
SCS

113754

\$25

A2A2

Reduced to \$20 for order of 50 or more

Cogent **TWIST** EX95

Shottle x Major x Winchester

19/09/2005

Dam: Cogent Major Tex VG88

2nd Dam: Cogent Winchester Tex VG86

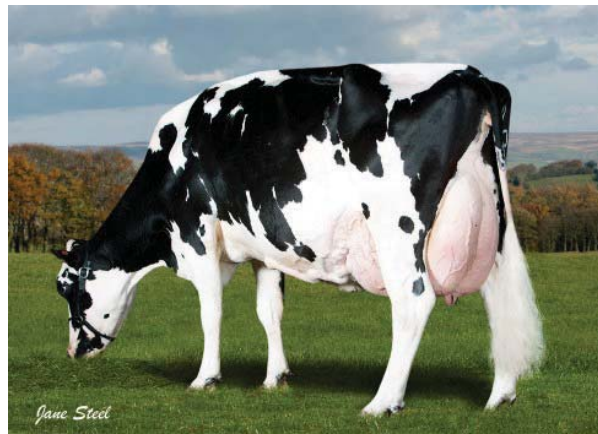
aAa: 453621

AUSTRALIAN PROOF

SEXED SEMEN
\$POA

OUTCROSS

BPI89%	HWI82%	TWI89%
282	208	264



HILLBARTON TWIST 990

PRODUCTION 224 DTRS | 93 HERDS | DECEMBER 2016 | SOURCE UK

MILK _{kg}	FAT _{kg}	FAT%	
727	19.8	-0.10	
PROT _{kg}	PROT%	REL%	TYPE
22.8	-0.01	64	2.09

	-2	-1	0	+1	+2	
Type Merit					0.90	EXCELLENT
Mammary					0.42	EXCELLENT
Feet & Legs					1.61	EXCELLENT
Stature					1.14	160 CM
Body Depth					1.06	DEEP
Rump Angle					2.52	LOW PINS
Rump Width					1.53	WIDE
Foot Angle					0.80	STEEP
Fore Udder Attach					-0.29	TIGHT
Rear Udder Height					0.23	VERY HIGH
Udder Support					-0.38	STRONG
Udder Depth					-0.47	20CM ABOVE
Front Teat Placement					0.22	CLOSE
Teat Length					1.27	LONG
Locomotion					1.62	EXCELLENT

1906 DTRS | 487 HERDS | 99% REL



HEALTH & FITNESS

FERTILITY INDEX	-2.40	LOW
LIFESPAN	0.40	HIGH
CALVING EASE	-0.1	DIFFICULT
MILKING SPEED	0.35	EASY
TEMPERAMENT	1.76	VERY PLACID
SOMATIC CELL	-8	IMPROVER
CONDITION SCORE	1.23	AVERAGE

BPI
Reliability
Locomotion
Longevity
Temperament
SCS



114884

\$22

A1A2

Reduced to \$18 for order of 50 or more

Wiltor **CRUISE** EX92

Iota x Planet x Ramos

13/02/2012

Dam: Larcrest Case VG86 1st Lact: 14229 kgs 305 Days 3.80%F 3.60%P
2nd Dam: Larcrest Crimson EX93(3) 3rd Lact: 15409 kgs 305 Days 4.30%F
aAa: 342516

AUSTRALIAN PROOF

SEXED SEMEN
\$POA

BPI ^{72%}	HWI ^{67%}	TWI ^{72%}
144	114	145

✓ OUTCROSS



SAINTBRIDES CRUISE CARLA GP84

PRODUCTION 212 DTRS | 104 HERDS | DECEMBER 2016 | SOURCE UK

MILK _{kgs}	FAT _{kgs}	FAT%
414	19.3	0.04
PROT _{kgs}	PROT%	REL%
10.3	-0.04	96

	-2	-1	0	+1	+2	
UK Type Merit					0.82	EXCELLENT
Mammary					0.50	EXCELLENT
UK Feet & Legs					1.21	EXCELLENT
Stature					-0.13	160 CM
Body Depth					0.81	DEEP
Rump Angle					1.32	LOW PINS
Rump Width					1.08	WIDE
Foot Angle					-2.13	STEEP
Fore Udder Attach					-0.21	TIGHT
Rear Udder Height					0.94	VERY HIGH
Udder Support					1.13	STRONG
Udder Depth					-0.52	20CM ABOVE
Front Teat Placement					1.78	CLOSE
Teat Length					-0.56	LONG
Locomotion					1.39	EXCELLENT

212 DTRS | 104 HERDS | | 93% REL



HEALTH & FITNESS

FERTILITY INDEX	9.20	HIGH
LIFESPAN	0.20	HIGH
CALVING EASE	0.3	EASY
MILKING SPEED	-1.05	DIFFICULT
TEMPERAMENT	0.13	AVERAGE
SOMATIC CELL	-16	IMPROVER
CONDITION SCORE	2.03	HIGH

Type
Locomotion
Longevity
Fertility
Temperament
SCS

115760

\$45

Genomic Sire

A1A2

Cogent **SUPERSHOT** ✓ OUTCROSS

Supersire x Superstition x Shottle

SEXED SEMEN
\$POA

14/03/2013

Dam: Rose Supershot VG88 1st Lact: 11073 kgs 305 Days 3.97%F 3.58%P
2nd Dam: RC Classic VG87 1st Lact: 12398 kgs 305 Days 3.77%F 3.75%P
aAa: 435

AUSTRALIAN PROOF

BPI ^{64%}	HWI ^{58%}	TWI ^{63%}
176	157	151



ROSE SUPERSHOT VG88

PRODUCTION DTRS 0 HERDS 0 | DECEMBER 2016 | SOURCE UK

MILK _{kgs}	FAT _{kgs}	FAT%
976	28.1	-0.12
PROT _{kgs}	PROT%	REL%
30.5	-0.01	68

	-2	-1	0	+1	+2	
UK Type Merit					1.93	EXCELLENT
Mammary					1.65	EXCELLENT
UK Feet & Legs					1.71	EXCELLENT
Stature					0.75	160 CM
Body Depth					0.37	DEEP
Rump Angle					0.33	LOW PINS
Rump Width					0.98	WIDE
Foot Angle					0.82	STEEP
Fore Udder Attach					1.39	TIGHT
Rear Udder Height					1.16	VERY HIGH
Udder Support					1.07	STRONG
Udder Depth					0.70	20CM ABOVE
Front Teat Placement					0.57	CLOSE
Teat Length					1.41	LONG
Locomotion					0.87	EXCELLENT

DAUGHTERS IN HERDS | 0 DTRS | 0 HERDS |
65% REL

HEALTH & FITNESS

FERTILITY INDEX	6.7	HIGH
LIFESPAN	0.6	HIGH
CALVING EASE	0.9	VERY EASY
MILKING SPEED	-0.32	AVERAGE
TEMPERAMENT	1.74	VERY PLACID
SOMATIC CELL	-19	IMPROVER
CONDITION SCORE	0.6	HIGH

Type
Fertility
Udders
Longevity
Feet & legs
SCS

Guye Holdings **SAMITE**

Monterey x Mogul x ManOMan x Shottle

12/05/2015

SIRE: View-Home Monterey ET
Dam: Guye Holdings Mogul Silk
MGD: M-Gee O Silk ET VG87

0 DTRS | 0 HERDS | DECEMBER 2016 | SOURCE AUSTRALIA

MILK _{kgs}	FAT _{kgs}	FAT%
383	29.5	0.12
PROT _{kgs}	PROT%	REL%
17.7	0.05	74

TYPE	
OVERALL TYPE	103
UDDER OVERALL	108
TEAT PLACEMENT FRONT	102
TEAT PLACEMENT REAR	104
TEAT LENGTH	95
REAR ATTACH HEIGHT	110
STATURE	104



HEALTH & FITNESS

DTR FERTILITY	112
SURVIVAL	107
CALVING EASE	102
MILKING SPEED	101
TEMPERAMENT	101
SOMATIC CELL	142
LIKEABILITY	102



Type Capacity
BPI/TWI Fertility
Udders
Calving Ease



117855

\$35

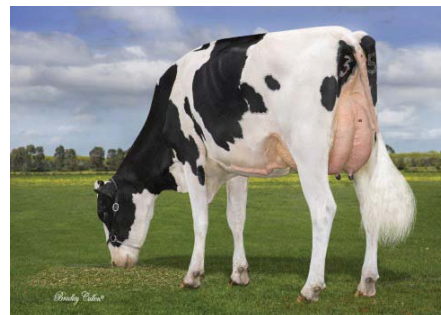


OUTCROSS

Genomic Sire

AUSTRALIAN PROOF

BPI _{60%}	HWI _{54%}	TWI _{59%}
268	230	261



FULL SISTER TO DAM GUYE HOLDINGS SAMITE

O'Connors **LOTTA CLASS**

1st Class x McCutchen x Snowman

09/04/2015

Dam: Snowbiz McCutchen Lottie VG87
2nd Dam: Freurehaven FGS Lucy VG86
aAa: 234165

DECEMBER 2016

MILK _{kgs}	FAT _{kgs}	FAT%
913	26.7	-0.11
PROT _{kgs}	PROT%	REL%
21.9	-0.09	67

TYPE	
OVERALL TYPE	3.14
UDDER OVERALL	3.21
TEAT PLACEMENT FRONT	1.31
TEAT PLACEMENT REAR	0.99
TEAT LENGTH	0.17
REAR UDDER HEIGHT	3.17
STATURE	2.36



HEALTH & FITNESS

FERTILITY INDEX	6.8	HIGH
LIFESPAN	0.4	HIGH
CALVING EASE	0.1	AVERAGE
MILKING SPEED	1.38	VERY EASY
TEMPERAMENT	1.98	VERY PLACID
SOMATIC CELL	-13	IMPROVER
CONDITION SCORE	-0.59	LOW



Type Feet & Legs
Fertility SCS
Udders
Longevity



116937

\$28



OUTCROSS

Genomic Sire

A2A2

AUSTRALIAN PROOF

BPI _{59%}	HWI _{53%}	TWI _{58%}
181	158	159



SNOWBIZ MCCUTCHEEN LOTTIE VG87

OH DG **MAXIMUS**

Pure x Supersire x Niagra

07/05/2015

Dam: DG My Love VG85
2nd Dam: My Lady
aAa: 423

0 DTRS | 0 HERDS | DECEMBER 2016

MILK _{kgs}	FAT _{kgs}	FAT%
943	40.6	0.04
PROT _{kgs}	PROT%	REL%
29.4	-0.01	

TYPE	
OVERALL TYPE	1.99
UDDER OVERALL	1.86
TEAT PLACEMENT FRONT	0.61
TEAT PLACEMENT REAR	1.02
TEAT LENGTH	-0.32
REAR ATTACH HEIGHT	2.39
STATURE	0.54



HEALTH & FITNESS

DTR FERTILITY	3.0	HIGH
LIFESPAN	0.5	HIGH
CALVING EASE	0.3	EASY
MILKING SPEED	1.49	VERY EASY
TEMPERAMENT	1.55	VERY PLACID
SOMATIC CELL	-9	IMPROVER
CONDITION SCORE	0.06	AVERAGE



Productive Life Feet & Legs
Components SCS
Udders
Rump Angle



116940

\$30



OUTCROSS



SEXED SEMEN
\$POA

Genomic Sire

A1A2



DG MY LOVE VG85 2YR

Dock CONOR

Supershot x Mogul x Active

18/02/2015

Dam: NH Mogul Champ VG86

2nd Dam: Bremer Active Charm VG86

Lact. 1: 9883kgs 305 Days 4.7%F 3.6%P

aAa: 531

DECEMBER 2016

MILK _{kgs}	FAT _{kgs}	FAT%
787	29.6	-0.02
PROT _{kgs}	PROT%	REL%
27	0.02	66

TYPE	
OVERALL TYPE	2.38
UDDER OVERALL	2.27
TEAT PLACEMENT FRONT	1.66
TEAT PLACEMENT REAR	1.27
TEAT LENGTH	-0.31
STATURE	0.25



HEALTH & FITNESS

FERTILITY INDEX	7.6	HIGH
LIFESPAN	0.6	HIGH
CALVING EASE	0.7	VERY EASY
MILKING SPEED	0.78	VERY EASY
TEMPERAMENT	1.29	VERY PLACID
SOMATIC CELL	-13	IMPROVER
CONDITION SCORE	0.59	HIGH



Productive Life
Components
Udders
Med Stature

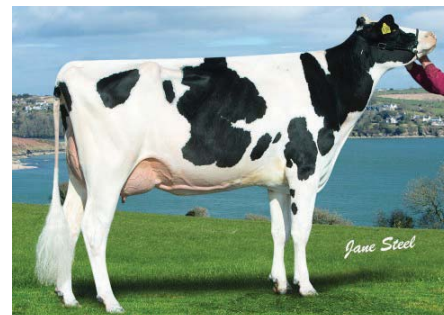
Feet & Legs
SCS



OUTCROSS



SEXED SEMEN
\$POA



NH MOGUL CHAMP

Cogent BILL

Balisto x Epic x Goldwyn

30/06/2014

Dam: HFP Lucy Lu 63 VG85 2nd Dam: Own Gold Lucille VG89

2nd Lact: 13532kgs 305 Days 4.74%F 3.43%P

aAa: 423

0 DTRS | 0 HERDS | DECEMBER 2016

MILK _{kgs}	FAT _{kgs}	FAT%
386	30.1	0.18
PROT _{kgs}	PROT%	REL%
22	0.12	68

TYPE	
OVERALL TYPE	2.06
UDDER OVERALL	1.72
TEAT PLACEMENT FRONT	0.65
TEAT PLACEMENT REAR	0.46
TEAT LENGTH	-0.53
STATURE	1.32



HEALTH & FITNESS

FERTILITY INDEX	3.1	IMPROVER
LIFESPAN	0.5	IMPROVER
CALVING EASE	0.1	AVERAGE
MILKING SPEED	-0.07	AVERAGE
TEMPERAMENT	1.41	GOOD
SOMATIC CELL	-28	IMPROVER
CONDITION SCORE	-0.05	LOW



Productive Life
Components
Grazing Merit
Calving Ease

Feet & Legs
SCS



OUTCROSS



SEXED SEMEN
\$POA



HFP LUCY LU VG85 2YR

Blondin Zimmer CAPTURE

Solomon x Uno x Atwood x Shottle

14/11/2015

Dam: EDG Claire Cling VG85

2nd Dam: Pine-Shelter Claire Wood VG87

0 DTRS | 0 HERDS | DECEMBER 2016 USA INFO.

MILK _{kgs}	FAT _{kgs}	FAT%
137	14.9	0.12
PROT _{kgs}	PROT%	REL%
4.3	0.00	67

TYPE	
OVERALL TYPE	3.67
UDDER OVERALL	3.65
TEAT PLACEMENT FRONT	2.68
TEAT PLACEMENT REAR	2.18
TEAT LENGTH	-0.40
STATURE	2.76



HEALTH & FITNESS

FERTILITY INDEX	6.8	HIGH
LIFESPAN	0.3	HIGH
CALVING EASE	-0.4	AVERAGE
MILKING SPEED	0.72	VERY EASY
TEMPERAMENT	1.08	VERY PLACID
SOMATIC CELL	-19	IMPROVER
CONDITION SCORE	-0.66	LOW



Super Type
Top Udders
Capacity
Longevity

Feet & Legs
SCS

117861

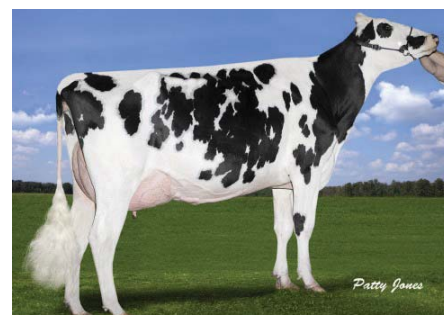
\$45

Genomic Sire

A2A2



OUTCROSS



2ND DAM PINE SHELTER CLAIREWOOD

Clydevale Medallion **CRUISER**

Medallion x Altalota x Mr Sam

09/06/2015

Sire: Bundalong Marks Medallion

Dam: Clydevale Iota Pevensey VG85

MGS: Regancrest Altalota

MGD: Clydevale MrSam Pisa EX91 1E

0 DTRS | 0 HERDS | 77 REL% | DECEMBER 2016

PROT _{kgs}	PROT%	FAT _{kgs}	FAT%
12	0.29	15	0.3
MILK _{ltr}	ASI _{kgs}	REL%	
-134	122	77	

TYPE	
OVERALL TYPE	108
UDDER OVERALL	113
TEAT PLACEMENT FRONT	105
TEAT PLACEMENT REAR	95
TEAT LENGTH	103
REAR ATTACH HEIGHT	113
STATURE	103



OUTCROSS



HEALTH & FITNESS

SURVIVAL	105
CALVING EASE	101
CELL COUNT	124
DAUGHTER FERTILITY	107
MILKING SPEED	102
TEMPERAMENT	101
LIKEABILITY	103



Type
Udders
Longevity
Med Stature

Feet & legs
SCS

BPI ^{66%}	HWI ^{60%}	TWI ^{65%}
197	147	229



CRUISER

Coomboona Megasure **SHANE**

Megasure x Mogul x Planet

04/05/2015

Sire: Butz Hill Megasure

Dam: Coomboona Mogul Shana VG85

MGS: Mountfield SSI Dcy Mogu

MGD: Ammon-Peachey Shana VG87

AUSTRALIAN INDICES DECEMBER 2016

PROT _{kgs}	PROT%	FAT _{kgs}	FAT%
10	0.08	40	0.44
MILK _{ltr}	ASI	REL%	
222	120	74%	

TYPE	
OVERALL TYPE	99
UDDER OVERALL	100
REAR ATT. HEIGHT	103
TEAT PLACEMENT FRONT	100
TEAT PLACEMENT REAR	100
TEAT LENGTH	97
REAR ATTACH HEIGHT	103
STATURE	101



OUTCROSS



HEALTH & FITNESS

SURVIVAL	107
CALVING EASE	103
SOMATIC CELL	157
DAUGHTER FERTILITY	108
MILKING SPEED	100
TEMPERAMENT	102
LIKEABILITY	102



Med Stature
Fertility
Longevity
Temperament

Calving Ease
SCS

BPI ^{59%}	HWI ^{53%}	TWI ^{58%}
238	190	197



SHANE

Coomboona Satisfaction **LUTHER**

Satisfaction x Planet x Goldwyn

16/09/2014

Sire: Ste Odile Satisfaction

Dam: OConnors Planet Lucia VG88

MGS: Ensenada Taboo Planet

MGD: Comestar Goldwyn Lilac VG88

AUSTRALIAN INDICES DECEMBER 2016

PROT _{kgs}	PROT%	FAT _{kgs}	FAT%
17	0.04	20	0.02
MILK _{ltr}	ASI	REL%	
437	111	75%	

TYPE	
OVERALL TYPE	103
UDDER OVERALL	103
REAR ATT. HEIGHT	101
TEAT PLACEMENT FRONT	96
TEAT PLACEMENT REAR	101
TEAT LENGTH	96
REAR ATTACH HEIGHT	101
STATURE	99



OUTCROSS



HEALTH & FITNESS

SURVIVAL	106
CALVING EASE	102
SOMATIC CELL	136
DAUGHTER FERTILITY	108
MILKING SPEED	104
TEMPERAMENT	101
LIKEABILITY	103



Type
Udders
Longevity
Fertility

Calving Ease
SCS

BPI ^{61%}	HWI ^{54%}	TWI ^{59%}
234	198	233



LUTHER

Apples **ABSOLUTE-RED ET**

Talent RC x Regiment-Red x Durham

04/09/2007

Sire: Ladino Park Talent Imp-ET

Dam: KHW Regiment Apple-Red-ET

MGS: Carrousel Regiment RED-ET

MGD: Kamps-Hollow Altitude-ET

aAa: 351462



OUTCROSS



DAM: KHW REGIMENT APPLE-RED-ET

3430 DTRS | 1661 HERDS | 64% US | USDA INDEX DECEMBER 2016

MILK _{kgs}	FAT _{kgs}	FAT%
-1540	6	0.25
PROT _{kgs}	PROT%	REL%
-12	0.14	98

	-2	-1	0	+1	+2	
Stature					1.64	TALL
Strength					1.67	STRONG
Body Depth					1.75	DEEP
Dairy Form					1.07	OPEN RIB
Rump Angle					-0.64	HIGH PINS
Thurl Width					2.69	WIDE
Rear Legs-Side View					-0.97	POSTY
Rear Legs-Rear View					2.67	STRAIGHT
Foot Angle					2.69	STEEP
Feet & Legs Score					1.84	HIGH
F. Udder Attachment					3.62	STRONG
Rear Udder Height					4.83	HIGH
Rear Udder Width					4.44	WIDE
Udder Cleft					1.74	STRONG
Udder Depth					1.93	SHALLOW
Front Teat Placement					1.88	CLOSE
Rear Teat Placement					1.99	CLOSE
Teat Length					-0.93	SHORT



Type
Udders
Feet & Legs
Capacity
Reliability



HEALTH & FITNESS

FERTILITY INDEX	-4.0
DTR CALVING EASE	11.2%
SIRE CALVING EASE	12.3%
MILKING SPEED	0.54
SOMATIC CELL	3.46

Gegania Prince
FELINO ET

Prince x Toystory x Lancelot

18/11/2009

Sire: New Farm Britt Prince

Dam: Gegania Toystory Felina VG87

MGS: Lancelot

MGD: Gegania Lancelot Federica ET VG87

aAa: 135264

Reduced
to \$18
for order
of 50 or
more



OUTCROSS



FELINO DTR

GPFT +1983 | REL 93% | 101 DTRS | 76 HERDS
ITALIAN INDEX DECEMBER 2016

MILK _{kgs}	FAT _{kgs}	FAT%	
-335	52	0.64	
PROT _{kgs}	PROT%	REL%	TYPE
21	0.32	93	1.29

	-2	-1	0	+1	+2	
Stature					0.34	TALL
Strength					0.10	STRONG
Body Depth					0.38	DEEP
Dairy Form					1.78	OPEN RIB
Rump Angle					0.24	SLOPED
Thurl Width					0.61	WIDE
Conformation					1.86	DESIRABLE
Rear Leg Set					0.25	SICKLE
Rear Leg Rear View					1.97	STRAIGHT
Foot Angle					0.48	STEEP
Locomotion					2.81	HIGH
Fore Attachment					1.41	STRONG
Rear Attach. Height					1.69	HIGH
Rear Attach. Width					2.57	WIDE
Udder Cleft					1.94	STRONG
Udder Depth					0.13	SHALLOW
Front Teat Placement					2.18	CLOSE
Rear Teat Placement					0.99	CLOSE
Teat Length					0.41	LONG



Capacity
Med Stature
Components
Longevity
Locomotion



HEALTH & FITNESS

FERTILITY INDEX	102
LIFESPAN	112
SOMATIC CELL	110
FEET & LEGS COMP.	2.06
UDDER COMPOSITE	1.37
DTR CALVING EASE	105
SIRE CALVING EASE	104
MILKING SPEED	100

COSWORTH

Supersire x Lightning x Ramos

25/10/2013

Sire: Supersire

Dam: Larcrest Chessa ET

MGS: Lightning

MGD: Larcrest Crimson ET EX9

aAa: 432516

GPFT +2966 | REL 75% | 0 DTRS | 0 HERDS
ITALIAN INDEX DECEMBER 2016

MILK _{kgs}	FAT _{kgs}	FAT%
887	77	0.34
PROT _{kgs}	PROT%	REL%
56	0.22	69

TYPE	
OVERALL TYPE	1.77
UDDER OVERALL	1.96
TEAT PLACEMENT FRONT	1.47
TEAT PLACEMENT REAR	2.06
TEAT LENGTH	1.73
REAR ATTACH HEIGHT	1.30
STATURE	2.75



HEALTH & FITNESS

FERTILITY INDEX	110
LIFESPAN	109
SOMATIC CELL	105
FEET & LEGS COMP.	1.68
DTR CALVING EASE	105
SIRE CALVING EASE	98
MILKING SPEED	n/a



Type	Fertility
Protein	Condition Score
Components	SCS
Longevity	

115766

\$30

A2A2

Genomic Sire

Reduced to \$28 for order of 50 or more



TORO COSWORTH

GALACTICO ET

Galaxy x Bookem x Shottle

19/08/2013

Sire: Galaxy

Dam: Val-Bisson Bookem Donna ET

MGS: Bookem

aAa: 132564

GPFT +2975 | REL 75% | 0 DTRS | 0 HERDS
ITALIAN INDEX DECEMBER 2016

MILK _{kgs}	FAT _{kgs}	FAT%
752	54	0.24
PROT _{kgs}	PROT%	REL%
39	0.11	69

TYPE	
OVERALL TYPE	2.16
UDDER OVERALL	2.46
TEAT PLACEMENT FRONT	2.65
TEAT PLACEMENT REAR	2.23
TEAT LENGTH	0.19
REAR ATTACH HEIGHT	2.06
STATURE	1.74



HEALTH & FITNESS

FERTILITY INDEX	104
LIFESPAN	116
SOMATIC CELL	112
FEET & LEGS COMP.	4.95
DTR CALVING EASE	118
SIRE CALVING EASE	104
MILKING SPEED	n/a



Type	Calving Ease
Udders	Capacity
Longevity	SCS
Fertility	

115764

\$30

A2A2

Genomic Sire

Reduced to \$28 for order of 50 or more



TORO GALACTICO

Sabbiona LEOPARDO

Supershot x O-Cosmopolitan x Man-Omans

28/03/2015

Sire: Cogent Supershot

Dam: Sabbiona Leandra VG85

MGD: Bonetti Milly VG88

aAa: 234165

GPFT +3628 | REL 75% | 0 DTRS | 0 HERDS
ITALIAN INDEX DECEMBER 2016

MILK _{kgs}	FAT _{kgs}	FAT%
1873	50	-0.19
PROT _{kgs}	PROT%	REL%
64	0.02	69

TYPE	
OVERALL TYPE	1.59
UDDER OVERALL	2.08
TEAT PLACEMENT FRONT	1.28
TEAT PLACEMENT REAR	0.44
TEAT LENGTH	0.84
REAR ATTACH HEIGHT	1.42
STATURE	0.60



HEALTH & FITNESS

FERTILITY INDEX	111
LIFESPAN	127
SOMATIC CELL	111
FEET & LEGS COMP.	3.22
DTR CALVING EASE	119
SIRE CALVING EASE	110
MILKING SPEED	n/a



Med Stature	Calving Ease
Udders	Condition Score
Strength	SCS
Feet & Legs	

116941

\$30

A2A2

Genomic Sire



LEOPARDO COPIA

HOLSTEIN FRIESIAN

A1A2

Reduced
to \$30
for order
of 50 or
moreRoyal Jeeve **SCOLARI**

Jeeves x Goldwyn x Champion

25/04/2010

Sire: Jeeves

Dam: Royal Melinda ET

MGS: Braedale Goldwyn

MGD: Gen-I-Beq Champion Shine ET

aAa: 132465

SEXED SEMEN
\$POA

OUTCROSS



ROYAL JEEVES ROSE VG86 - SISTER OF SCOLARI

GPFT 2844 | REL 92% | 293 DTRS | 148 HERDS
ITALIAN INDEX DECEMBER 2016

MILK _{kg}	FAT _{kg}	FAT%	
843	55	0.22	
PROT _{kg}	PROT%	REL%	TYPE
42	0.13	96	2.02

	-2	-1	0	+1	+2	
Stature					1.39	TALL
Strength					0.63	STRONG
Body Depth					0.46	DEEP
Dairy Form					2.29	OPEN RIB
Rump Angle					-0.35	SLOPED
Thurl Width					1.78	WIDE
Conformation					2.49	DESIRABLE
Rear Leg Set					-0.75	SICKLE
Rear Leg Rear View					1.86	STRAIGHT
Foot Angle					2.11	STEEP
Locomotion					2.49	HIGH
Fore Attachment					3.40	STRONG
Rear Attach. Height					2.52	HIGH
Rear Attach. Width					3.01	WIDE
Udder Cleft					2.44	STRONG
Udder Depth					2.17	SHALLOW
Front Teat Placement					0.25	CLOSE
Rear Teat Placement					0.07	CLOSE
Teat Length					0.83	LONG

Health traits
Med Stature
Type
Udders
Locomotion

HEALTH & FITNESS

FERTILITY INDEX	109
LIFESPAN	115
SOMATIC CELL	109
FEET & LEGS COMP.	2.48
UDDER COMPOSITE	2.19
DTR CALVING EASE	102
SIRE CALVING EASE	102
MILKING SPEED	103

A2A2

Heavenly **GOLDEN DREAMS**

Goldwyn x Durham x Storm

19/06/2008

Sire: Braedale Goldwyn

Dam: M D Delight Durham Atlee ET EX 92

MGS: Regancrest Elton Durham EX 90

MGD: M D Delight Strm Amberlee ET VG 88

aAa: 234165

SEXED SEMEN
\$POA

OUTCROSS



MATILDA GOLDEN DREAMS GENZIANA MB 89

GPFT 2336 | REL 96% | 1201 DTRS | 534 HERDS
ITALIAN INDEX DECEMBER 2016

MILK _{kg}	FAT _{kg}	FAT%	
-32	29	0.31	
PROT _{kg}	PROT%	REL%	TYPE
4	0.05	99	2.94

	-2	-1	0	+1	+2	
Stature					3.35	TALL
Strength					0.63	STRONG
Body Depth					0.54	DEEP
Dairy Form					2.26	OPEN RIB
Rump Angle					0.23	SLOPED
Thurl Width					2.38	WIDE
Conformation					4.42	DESIRABLE
Rear Leg Set					-1.58	SICKLE
Rear Leg Rear View					3.49	STRAIGHT
Foot Angle					3.93	STEEP
Locomotion					4.50	HIGH
Fore Attachment					4.91	STRONG
Rear Attach. Height					4.04	HIGH
Rear Attach. Width					1.86	WIDE
Udder Cleft					4.75	STRONG
Udder Depth					4.96	SHALLOW
Front Teat Placement					2.55	CLOSE
Rear Teat Placement					2.46	CLOSE
Teat Length					1.30	LONG

Type
Udders
Feet & Legs
Components
Locomotion

HEALTH & FITNESS

FERTILITY INDEX	106
LIFESPAN	111
SOMATIC CELL	112
FEET & LEGS COMP.	4.33
UDDER COMPOSITE	4.34
DTR CALVING EASE	105
SIRE CALVING EASE	101
MILKING SPEED	102

Go-Farm Royal **EUDON**

Million x Shottle x O-Man

15/09/2010

Sire: England-Ammon Million E 92

Dam: Wabash-Way Emilyann ET VG88

MGS: Picston Shottle

MGD: Crockett-Acres Elita ET

aAa: 234165

Reduced
to \$28
for order
of 50 or
more

✓ OUTCROSS

♀ SEXED SEMEN
\$POA

ZAN EUDON MARSHA MB86

GPFT 2396 | REL 98% | 2608 DTRS | 727 HERDS
ITALIAN INDEX DECEMBER 2016

MILK _{kgs}	FAT _{kgs}	FAT%	
937	64	0.27	
PROT _{kgs}	PROT%	REL%	TYPE
26	-0.05	99	3.13

	-2	-1	0	+1	+2	
Stature					3.14	TALL
Strength					2.80	STRONG
Body Depth					2.21	DEEP
Dairy Form					2.23	OPEN RIB
Rump Angle					0.85	SLOPED
Thurl Width					3.64	WIDE
Conformation					4.74	DESIRABLE
Rear Leg Set					0.67	SICKLE
Rear Leg Rear View					0.62	STRAIGHT
Foot Angle					2.60	STEEP
Locomotion					3.18	HIGH
Fore Attachment					5.41	STRONG
Rear Attach. Height					3.03	HIGH
Rear Attach. Width					2.82	WIDE
Udder Cleft					4.34	STRONG
Udder Depth					3.59	SHALLOW
Front Teat Placement					3.65	CLOSE
Rear Teat Placement					3.39	CLOSE
Teat Length					0.43	LONG



Type
Udders
Feet & legs
Longevity
Milking Speed



HEALTH & FITNESS

FERTILITY INDEX	98
LIFESPAN	116
SOMATIC CELL	103
FEET & LEGS COMP.	2.20
UDDER COMPOSITE	4.01
DTR CALVING EASE	105
SIRE CALVING EASE	103
MILKING SPEED	108

Campogallo
ZAMAGNI ET

A2A2

Reduced
to \$40
for order
of 50 or
more

✓ OUTCROSS

SEXED SEMEN
\$POAWORLD LEADING
OUTCROSS

Super x Active x Laudan

06/01/2011

Sire: Super

Dam: Campogalo Gaia ET

MGS: Active

MGD: Campogallo Simona ET

aAa: 234165



CUSANA ZAMAGNI MESSINA VG85

GPFT 2515 | REL 92% | 250 DTRS | 158 HERDS
ITALIAN INDEX DECEMBER 2016

MILK _{kgs}	FAT _{kgs}	FAT%	
834	48	0.16	
PROT _{kgs}	PROT%	REL%	TYPE
46	0.17	96	2.27

	-2	-1	0	+1	+2	
Stature					2.18	TALL
Strength					1.77	STRONG
Body Depth					1.74	DEEP
Dairy Form					2.29	OPEN RIB
Rump Angle					-1.08	SLOPED
Thurl Width					1.71	WIDE
Conformation					3.35	DESIRABLE
Rear Leg Set					1.44	SICKLE
Rear Leg Rear View					1.13	STRAIGHT
Foot Angle					1.91	STEEP
Locomotion					2.04	HIGH
Fore Attachment					3.73	STRONG
Rear Attach. Height					2.87	HIGH
Rear Attach. Width					2.03	WIDE
Udder Cleft					4.04	STRONG
Udder Depth					2.62	SHALLOW
Front Teat Placement					2.09	CLOSE
Rear Teat Placement					1.85	CLOSE
Teat Length					1.16	LONG



Outcross of Year
Udders
Strength
Longevity
Milking Speed



HEALTH & FITNESS

FERTILITY INDEX	99
LIFESPAN	111
SOMATIC CELL	104
FEET & LEGS COMP.	1.38
UDDER COMPOSITE	3.08
DTR CALVING EASE	102
SIRE CALVING EASE	103
MILKING SPEED	102

Zial million **EJECT**

Million x Titanic x Rudolph

22/04/2010

Sire: England-Ammon Million

Dam: Zial Titanic Zisky

MGS: Hartline Titanic ET

MGD: Zial Rudolph Terry

aAa: 315246

Reduced
to \$15
for order
of 50 or
more

OUTCROSS

SEXED SEMEN
\$POA

ALL. MILCOR ROYAL EJECT BARBARINA MB 87

GPFT 2506 | REL 97% | 1414 DTRS | 553 HERDS
ITALIAN INDEX DECEMBER 2016

MILK _{kgs}	FAT _{kgs}	FAT%	
1770	41	-0.23	
PROT _{kgs}	PROT%	REL%	TYPE
56	-0.02	98	1.44

	-2	-1	0	+1	+2	
Stature					0.50	TALL
Strength					1.23	STRONG
Body Depth					0.62	DEEP
Dairy Form					-0.11	OPEN RIB
Rump Angle					0.32	SLOPED
Thurl Width					1.71	WIDE
Conformation					1.28	DESIRABLE
Rear Leg Set					-1.27	SICKLE
Rear Leg Rear View					1.40	STRAIGHT
Foot Angle					2.65	STEEP
Locomotion					2.21	HIGH
Fore Attachment					2.85	STRONG
Rear Attach. Height					0.91	HIGH
Rear Attach. Width					3.50	WIDE
Udder Cleft					3.20	STRONG
Udder Depth					1.27	SHALLOW
Front Teat Placement					1.55	CLOSE
Rear Teat Placement					1.64	CLOSE
Teat Length					-0.17	LONG



Type
Udders
Med Stature
Longevity
Milking Speed



HEALTH & FITNESS

FERTILITY INDEX	99
LIFESPAN	113
SOMATIC CELL	105
FEET & LEGS COMP.	2.30
UDDER COMPOSITE	1.96
DTR CALVING EASE	100
SIRE CALVING EASE	103
MILKING SPEED	104

A1A2

Gandy Gday **VALVERDE**

Goldday x Jardin x Murphy

20/06/2011

Sire: Heidenskipste Goldday

Dam: Gandy Ermione

MGS: Jardin ET

MGD: Gandy Fiorella ET



OUTCROSS



FUSTA VALVERDE TORQUA GP82

GPFT 2876 | REL 87% | 137 DTRS | 94 HERDS
ITALIAN INDEX DECEMBER 2016

MILK _{kgs}	FAT _{kgs}	FAT%	
700	82	0.53	
PROT _{kgs}	PROT%	REL%	TYPE
54	0.30	92	1.99

	-2	-1	0	+1	+2	
Stature					2.68	TALL
Strength					2.05	STRONG
Body Depth					2.47	DEEP
Dairy Form					2.21	OPEN RIB
Rump Angle					-0.90	SLOPED
Thurl Width					2.50	WIDE
Conformation					2.68	DESIRABLE
Rear Leg Set					-1.59	SICKLE
Rear Leg Rear View					1.32	STRAIGHT
Foot Angle					2.55	STEEP
Locomotion					1.89	HIGH
Fore Attachment					1.87	STRONG
Rear Attach. Height					3.04	HIGH
Rear Attach. Width					1.97	WIDE
Udder Cleft					2.31	STRONG
Udder Depth					1.82	SHALLOW
Front Teat Placement					0.90	CLOSE
Rear Teat Placement					0.89	CLOSE
Teat Length					0	LONG



Type
Udders
Components
Longevity
Milking Speed



HEALTH & FITNESS

FERTILITY INDEX	107
LIFESPAN	107
SOMATIC CELL	104
FEET & LEGS COMP.	2.00
UDDER COMPOSITE	1.98
DTR CALVING EASE	109
SIRE CALVING EASE	101
MILKING SPEED	105

A2A2

Go-Farm **COLTRANE**

Freddie x Shottle x Outside

14/06/2011

Sire: Badger-Bluff Fanny Freddie

Dam: Larcrest Cosmopolitan

MGS: Picston Shottle

MGD: Larcrest Oside Champagne

aAa: 342

Reduced
to \$22
for order
of 50 or
more

✓ OUTCROSS

♀ SEXED SEMEN
\$POA

SERRA FARM COLTRANE UESPA GP82

GPFT 2495 | REL 92% | 276 DTRS | 160 HERDS
ITALIAN INDEX DECEMBER 2016

MILK _{kg}	FAT _{kg}	FAT%	
1122	84	0.39	
PROT _{kg}	PROT%	REL%	TYPE
48	0.09	96	2.05

	-2	-1	0	+1	+2	
Stature					2.49	TALL
Strength					2.26	STRONG
Body Depth					2.08	DEEP
Dairy Form					1.82	OPEN RIB
Rump Angle					-1.27	SLOPED
Thurl Width					2.88	WIDE
Conformation					2.70	DESIRABLE
Rear Leg Set					0.91	SICKLE
Rear Leg Rear View					1.22	STRAIGHT
Foot Angle					2.79	STEEP
Locomotion					1.92	HIGH
Fore Attachment					2.62	STRONG
Rear Attach. Height					2.50	HIGH
Rear Attach. Width					1.86	WIDE
Udder Cleft					2.37	STRONG
Udder Depth					2.17	SHALLOW
Front Teat Placement					1.88	CLOSE
Rear Teat Placement					1.56	CLOSE
Teat Length					-0.84	LONG



Type
Udders
Components
Capacity
Longevity



HEALTH & FITNESS

FERTILITY INDEX	104
LIFESPAN	105
SOMATIC CELL	101
FEET & LEGS COMP.	1.68
UDDER COMPOSITE	2.30
DTR CALVING EASE	107
SIRE CALVING EASE	104
MILKING SPEED	103

A1A2

Amighetti Mom **GARCIA**

Man-Oman x Shottle x Iron

29/06/2010

Sire: Long-Langs Oman

Dam: Amighetti Shottle Ave

MGS: Picston Shottle ET

MGD: Amighetti Iron Alundra

aAa: 234516

✓ OUTCROSS



GARCIA PASQUETTA B+83

GPFT 2405 | REL 97% | 1020 DTRS | 378 HERDS
ITALIAN INDEX DECEMBER 2016

MILK _{kg}	FAT _{kg}	FAT%	
821	59	0.27	
PROT _{kg}	PROT%	REL%	TYPE
40	0.12	98	1.10

	-2	-1	0	+1	+2	
Stature					0.75	TALL
Strength					0.19	STRONG
Body Depth					-0.41	DEEP
Dairy Form					0.52	OPEN RIB
Rump Angle					0.82	SLOPED
Thurl Width					-0.07	WIDE
Conformation					1.48	DESIRABLE
Rear Leg Set					-0.43	SICKLE
Rear Leg Rear View					0.84	STRAIGHT
Foot Angle					0.92	STEEP
Locomotion					2.88	HIGH
Fore Attachment					1.64	STRONG
Rear Attach. Height					0.96	HIGH
Rear Attach. Width					-0.10	WIDE
Udder Cleft					3.36	STRONG
Udder Depth					2.01	SHALLOW
Front Teat Placement					1.72	CLOSE
Rear Teat Placement					1.90	CLOSE
Teat Length					-1.65	LONG



Udders
Components
Med Stature
Longevity
Calving Ease



HEALTH & FITNESS

FERTILITY INDEX	108
LIFESPAN	113
SOMATIC CELL	100
FEET & LEGS COMP.	2.05
UDDER COMPOSITE	2.00
DTR CALVING EASE	113
SIRE CALVING EASE	106
MILKING SPEED	106

Pirolo Planet **MUFASA**

Planet x O-Man x Jocko

21/04/2010

Sire: Ensenada Taboo Planet

Dam: Pirolo O-Man Stupenda

MGS: O-Bee Manfred Justice

MGD: Pirolo Jocko Susan ET

aAa: 153642

Reduced
to \$25
for order
of 50 or
more

✓ OUTCROSS



MUFASA MUSTAFA B+82

GPFT 2569 | REL 91% | 191 DTRS | 122 HERDS
ITALIAN INDEX DECEMBER 2016

MILK _{kg}	FAT _{kg}	FAT%	
1247	51	0.05	
PROT _{kg}	PROT%	REL%	TYPE
55	0.12	96	1.35

	-2	-1	0	+1	+2	
Stature					0.27	TALL
Strength					0.58	STRONG
Body Depth					0.74	DEEP
Dairy Form					1.84	OPEN RIB
Rump Angle					-0.60	SLOPED
Thurl Width					2.93	WIDE
Conformation					1.46	DESIRABLE
Rear Leg Set					1.76	SICKLE
Rear Leg Rear View					2.48	STRAIGHT
Foot Angle					0.47	STEEP
Locomotion					3.18	HIGH
Fore Attachment					1.13	STRONG
Rear Attach. Height					2.23	HIGH
Rear Attach. Width					3.68	WIDE
Udder Cleft					2.38	STRONG
Udder Depth					-0.18	SHALLOW
Front Teat Placement					1.54	CLOSE
Rear Teat Placement					0.69	CLOSE
Teat Length					0.49	LONG



Med Stature
Components
Calving Ease
Longevity
Locomotion



HEALTH & FITNESS

FERTILITY INDEX	102
LIFESPAN	112
SOMATIC CELL	107
FEET & LEGS COMP.	2.00
UDDER COMPOSITE	1.31
DTR CALVING EASE	109
SIRE CALVING EASE	103
MILKING SPEED	99

✓ OUTCROSS

A1A2

Castelbosco Ins. **JUDO**

Iota x Shottle x Britt

15/02/2012

Sire: Iota

Dam: Castelbosco E Shott Florina

MGS: Picston Shottle

aAa: 324

Reduced
to \$25
for order
of 50 or
moreSEXED SEMEN
\$POA

CASTELBOSCO SHOTTLE FLORINA EX92

GPFT 2638 | REL 88% | 271 DTRS | 127 HERDS
ITALIAN INDEX DECEMBER 2016

MILK _{kg}	FAT _{kg}	FAT%	
811	50	0.17	
PROT _{kg}	PROT%	REL%	TYPE
37	0.10	93	2.65

	-2	-1	0	+1	+2	
Stature					3.31	TALL
Strength					2.95	STRONG
Body Depth					2.57	DEEP
Dairy Form					2.16	OPEN RIB
Rump Angle					0.45	SLOPED
Thurl Width					3.36	WIDE
Conformation					4.57	DESIRABLE
Rear Leg Set					1.29	SICKLE
Rear Leg Rear View					2.48	STRAIGHT
Foot Angle					2.41	STEEP
Locomotion					3.45	HIGH
Fore Attachment					3.65	STRONG
Rear Attach. Height					2.84	HIGH
Rear Attach. Width					2.11	WIDE
Udder Cleft					2.37	STRONG
Udder Depth					2.94	SHALLOW
Front Teat Placement					2.33	CLOSE
Rear Teat Placement					2.68	CLOSE
Teat Length					1.08	LONG



Udders
Components
Fertility
Capacity
Calving Ease



HEALTH & FITNESS

FERTILITY INDEX	110
LIFESPAN	111
SOMATIC CELL	103
FEET & LEGS COMP.	2.68
UDDER COMPOSITE	2.83
DTR CALVING EASE	116
SIRE CALVING EASE	101
MILKING SPEED	110

Garioni Ryl **VANHALEN**

Genomic Sire

Montross x Mccutchen x Observer

07/02/2015

Sire: Bacon-Hill Montross

Dam: Sonray-Acres

MGS: De-Su McCutchen

MGD: Sonray-Acres Soc Observ

aAa: 324

GPFT 3803 | REL 69% | 0 DTRS | 0 HERDS

ITALIAN INDEX DECEMBER 2016

MILK _{kg}	FAT _{kg}	FAT%
2137	84	0.06
PROT _{kg}	PROT%	REL%
76	0.04	75

TYPE	
OVERALL TYPE	3.04
UDDER OVERALL	3.06
TEAT PLACEMENT FRONT	2.13
TEAT PLACEMENT REAR	0.94
TEAT LENGTH	-0.99
REAR ATTACH HEIGHT	4.63
STATURE	2.00



HEALTH & FITNESS

FERTILITY INDEX	102
LIFESPAN	116
SOMATIC CELL	106
FEET & LEGS COMP.	4.69
DTR CALVING EASE	117
SIRE CALVING EASE	101
MILKING SPEED	n/a



Type Components
Udders Longevity
Capacity

117858

\$30

Genomic Sire

A2A2



SEXED SEMEN
\$POA



OUTCROSS



TORO VAN HALEN

Idevra Ryl **CARLOFORTE**

Genomic Sire

Alta1stclass x Eudon x Planet

02/04/2015

Sire: Zahbulls Alta

Dam: Idevra Royal

MGD: Royal Idevra Planet Carla

aAa: 231

GPFT 3435 | REL 69% | 0 DTRS | 0 HERDS

ITALIAN INDEX DECEMBER 2016

MILK _{kg}	FAT _{kg}	FAT%
1034	69	0.29
PROT _{kg}	PROT%	REL%
55	0.21	75

TYPE	
OVERALL TYPE	2.36
UDDER OVERALL	3.06
TEAT PLACEMENT FRONT	2.96
TEAT PLACEMENT REAR	1.84
TEAT LENGTH	0.19
REAR ATTACH HEIGHT	2.45
STATURE	2.26



HEALTH & FITNESS

FERTILITY INDEX	107
LIFESPAN	117
SOMATIC CELL	106
FEET & LEGS COMP.	4.12
DTR CALVING EASE	122
SIRE CALVING EASE	106
MILKING SPEED	n/a



Type Legs & Feet
Udders Calving Ease
Components

117859

\$40

A2A2

Genomic Sire



OUTCROSS

Reduced to \$35 for order of 50 or more



CARLOFORTE

Fantasy Allmei **SHARPE**

Genomic Sire

Alta1stclass x Epic x Hayden

27/02/2015

Sire: Zahbulls Alta

Dam: Sepia ET

MGS: Generations Epic ET

MGD: Sabrin 192

aAa: 234

GPFT 3855 | REL 69% | 0 DTRS | 0 HERDS

ITALIAN INDEX DECEMBER 2016

MILK _{kg}	FAT _{kg}	FAT%
2423	85	-0.09
PROT _{kg}	PROT%	REL%
78	-0.03	75

TYPE	
OVERALL TYPE	2.91
UDDER OVERALL	3.72
TEAT PLACEMENT FRONT	2.12
TEAT PLACEMENT REAR	1.74
TEAT LENGTH	-0.96
REAR ATTACH HEIGHT	4.95
STATURE	1.68



HEALTH & FITNESS

FERTILITY INDEX	100
LIFESPAN	117
SOMATIC CELL	105
FEET & LEGS COMP.	3.72
DTR CALVING EASE	108
SIRE CALVING EASE	104
MILKING SPEED	n/a



Type Longevity
Productive Life Feet & Legs
Udders

117857

\$45

Genomic Sire

A1A1



OUTCROSS



SEXED SEMEN
\$POA



TORO SHARPE

SUPPLEMENTARY DAIRY SIRE LIST 2017

All prices are GST exclusive

HOLSTEIN FRIESIAN SIRES		aAa	A2A2	\$	PACK
116934	KNS Barolo (g)	234615	A2A2	\$25.00	
116942	Anderstrup Clash (g)	243156	A2A2	\$35.00	
116758	Aquila Jeev Bagolino	156324		\$28.00	
115767	Awesome Red (Sexed)			\$90.00	
116948	Coonboona Supershot Bouyancy Pp (g)		A2A2	\$20.00	
116760	Brideview Super Bell		A1A2	\$18.00	
115759	Buslea perfector Bold (Buddha)	135246	A1A2	\$20.00	\$8.00
115775	Carenda Flashback	423651	A1A2	\$22.00	
116772	Carenda Vizabull Picola 375 (Vizabull) (g)			\$24.00	
110768	Cogent Azure			\$25.00	
114883	Cogent Diego	234		\$25.00	
115774	Cogent DG Superstyle	342		\$25.00	
116763	Coolmohan Flynn (g)	531	A1A2	\$18.00	
116943	Coonboona Kingboy Seamus (g)		A2A2	\$24.00	
112754	Country Road Canbee			\$25.00	
113924	De-Su Ransom ET			\$25.00	
114882	Dunnerdale Kestrel	534162		\$16.00	
115925	Eclipse Eurostar	432516	A2A2	\$18.00	\$8.00
115770	Famous (g)			\$20.00	
116769	Glamour Jabir Craven (g)			\$25.00	
113898	Go Farm Pitbull			\$25.00	
115761	TW Goodwhone (g)	234		\$18.00	
116938	Prismagen King George (g)	342	a2a2	\$28.00	
112740	GP Asotman			\$15.00	
116771	Hindlee Picola Royal Roumare (Royal Pic) (g)			\$25.00	
116765	Inch Robert (g)	546	A1A2	\$16.00	
116947	Jet Star Manoman Tricken	324165	A2A2	\$22.00	\$8.00
113752	Kaarmona Caleb Useage	261435	A1A2	\$18.00	
115772	Kirk Andrews Jenkins	435216	A2A2	\$24.00	\$8.00
114867	Manna Farm Deancox		A2A2	\$25.00	
116946	Manna Farm Dren Darnet		A2A2	\$18.00	\$8.00
110900	Manna Farm Santo Delsanto	513426	A2A2	\$22.00	
112892	Mincio	243165		\$18.00	
116761	Morrisheen Een		A1A2	\$18.00	
114874	Mr All About It (g)		A2A2	\$35.00	
109747	New Farm Britt Prince	234165		\$18.00	
111789	O-Man End Story TL	234156		\$22.00	
111789	O-Man End Story TL (sexed)	234156		\$55.00	
112742	Ondaedge Alex Tee			\$12.00	
113779	Pagini	342156		\$18.00	
113873	Pirola Goldwyn Wyman		A1A2	\$40.00	
116770	Priam	243156		\$15.00	
112745	Sabbiona Goldfarm	312546		\$28.00	
112745	Sabbiona Goldfarm (sexed)	312546		\$60.00	
114987	Sala Shottle Paracas			\$25.00	
109745	Scooby-Duu		A2A2	\$25.00	
112743	Sunday	234156		\$18.00	
111885	Toc-Farm Goldfish			\$35.00	
115915	Topspeed Goldyn ET			\$25.00	
103780	Vanzetti Valentein Raul			\$20.00	
116933	Wandilla Informer Budlight	135246	A1A2	\$22.00	\$8.00
116945	Winaview Supergold (g)			\$22.00	
108754	Wizzard			\$20.00	
116935	WKM Malaga ET	234165	A2A2	\$28.00	
112741	Woodmarsh Asterix			\$18.00	

BUDGET SEMEN available from \$5 - \$10

For more semen please refer to our website
www.geneticenterprises.co.nz



COGENT

UK, Ireland and Canada. Well proven with current sires like Cruise, Milo and Twist suit our NZ Grazing System. Twist is the number one overseas bull in Australia and his first NZ Daughters are doing extremely well.

Cogent's sexed semen is of very high quality with good Pregnancy Rates. GE was the first NZ Company to use sexed semen in NZ - 2003, 100 straws of Cogent Courier.



INTERMIZOO & INSEME ITALY

The Italian Sires from Inseme and Intermizoo are doing extremely well in NZ and have large daughter numbers in our high producing herds. Gold Farm and End Story have excelled in Health and Fitness Traits. Super Udders and Sires like Golden Dreams and Scooby Du have also left very high Type Daughter's.



SEXING TECHNOLOGIES

Mainly sexed semen from some of the Worlds Highest Genomic Sires. ST has the leading HIGH TYPE Sires in Absolute Red - Holstein. Plus the World Leading Jersey in Tequila. Also a strong group of Ayrshire Sires.



OHG GERMANY

Our European source of leading Holstein Genetics. Their sires like Ramos - World Leader on Longevity. Now Boss who was the number one Genomic Bull in Europe with a Proof and many very good NZ Daughters.

aAa® Quick Start Guide



Are you experiencing any of the following?

- Culling too many young cows because of poor udders, production, fertility, lameness, high cell counts, temperament or calving problems?
- Using the best bulls and producing disappointing daughters?
- Seeing your cows becoming increasingly frail and less functional?

If you answered yes to any of the above, aAa® Animal Analysis can help you:

- ✓ Identify the *cause* of your cow's problems.
- ✓ Determine what the bulls you select *must* bring to breed a more balanced and functional herd.

How does aAa® work?

A dairy cow's *form* is made up of many body parts that work together to keep her alive and producing. Her structural *form* determines her *functional* capability to milk well, convert feed efficiently, calve easily, stay healthy, be durable and compete in a herd environment. aAa® approved analysers study the way a dairy cow's body parts are formed, they identify the cow's problems and determine which aAa® numbers a bull must bring to a mating to correct these problems and improve the *form and function* of the next generation. The six aAa® numbers and some of their important functions are shown below:



1 – Dairy
Feminine will to milk & more milk for size



2 – Tall
High, elastic udder for modern milking



3 – Open
Space in pelvis for udder, calving & longer breeding life



4 – Strong
Room for heart & lungs; healthy udder, feet & legs



5 – Smooth
Better appetite, greater capacity to eat & drink

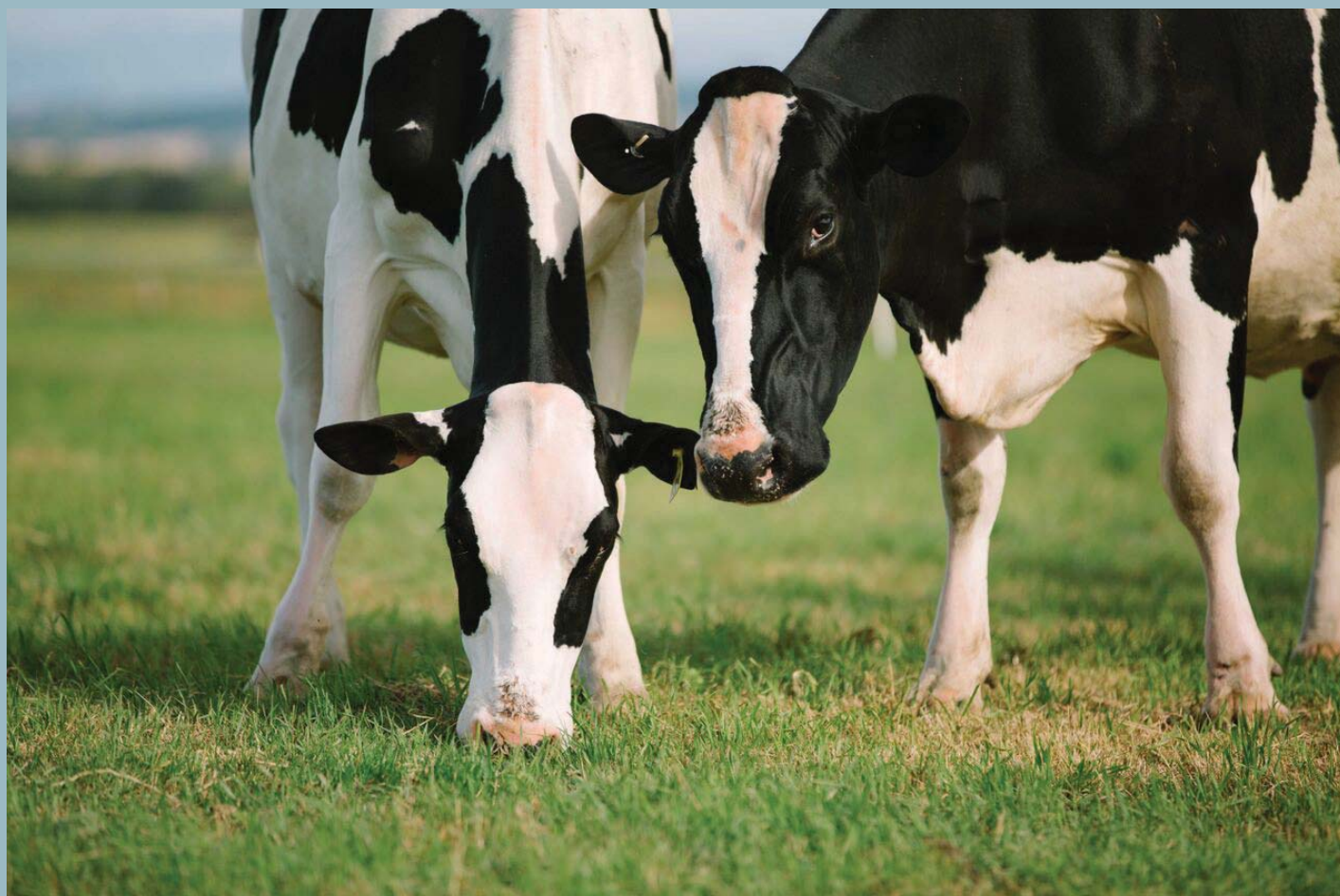


6 – Style
Durable bones, blending of parts & attentive character

aAa® numbers are shown from left to right:

for a cow in the order she *needs* them, and for a bull in the order he *sires* them.

For best results select bulls that *closely match* the aAa® numbers of your cows.



HANDLING SEXED SEMEN

Information supplied by



Maximising conception rates is dependent upon attention to detail. On farm results have clearly shown that following the simple steps below will ensure the best possible success rates.

Use tweezers, never fingers to handle straws.

- Never take out an individual straw to look at it and then put it back. It will almost certainly damage the sperm.
- Minimise the length of time that a straw container is kept above the liquid nitrogen level while removing the straw to be used.
- Take no more than five seconds (if you need longer, lower the canister back into the nitrogen for at least ten seconds before trying again).

Straw Thawing

Check the temperature of the water in your thawing device with a thermometer.

- Only remove one straw at a time for thawing.
- Flick the straw to remove any trapped nitrogen.
- Thaw the straw straight away in an electric thawer at 37 °C for 40 seconds.
- Thoroughly dry the straw; water kills sperm.
- Use clean straw cutters, or sharp scissors to cut off the sealed end.
- Once thawed don't let the straw cool down again.
- Pre-warm the AI equipment and keep it insulated until the insemination (especially in cold weather).
- Animals should be inseminated within five minutes of removing the straw from the tank.
- Once thawed, straws cannot be re-frozen.
- Do not split straws.



EQUIPMENT

Gloves (Pkt 100)	\$28.00
Wipes (Pkt 100)	\$6.00
Sheaths (Green tip) Pkt 50	\$8.00
Sheaths (Blue Tip) Pkt 50	\$8.00
Lubricant 1 Litre	\$10.50
Lubricant 2 Litre	\$18.00
Pistolettes	\$60.00
Estroprotect Pkt 50 (Available in 5 colours)	\$112.50
Straw Thaw Unit 240v	POA
MooCall Calving Sensor	POA
New & Near New Tanks	POA
Hire Tanks (Season)	\$100.00
Hire Tanks (Per Day)	\$5.00
Test Tank (Testing the holding time)	\$30.00
Empty Tank Storage	Free
Liquid Nitrogen Per Litre	\$7.50
Courier Fees (Out & back tickets per tank)	
Despatch Fee	\$65.00
Equipment only	\$10.00
Other AI Handling fees	POA
Storage Annual Fee first 100	\$50.00
Storage fee over 100 straws (Per straw)	\$0.06

Your Genetic Enterprises Sales Consultant will carry on board a selection of the basic AI insemination gear and also LN2 on request.



Calving Alert sensor triggers approx 1 hour before calving

Range of tanks available to suit most requirements

Hire tanks available for the AI Season (Approx 6 - 8 weeks)

Tanks charged at a daily rate for short term loan

Test & document performance, plus the cost of LN2

Free storage of clients tanks between seasons

Fees range from \$20 per ticket depending on location

Despatch fee + Courier

GE incur handling fees when sending product off to another AI Company & regrettably these will be passed back to our clients.

Flat rate of \$50 for the first 100 straws/embryos

Six cents per straw charge over the initial 100 straws/embryos

All Technicians (Private operators). Check out our website for AI technicians working in your area

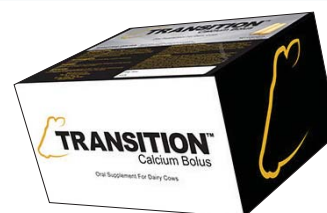
TRANSITION™ CALCIUM BOLUS – Oral supplement for Dairy Cows

Easy to administer & safe for the animal, Genetic Enterprises is pleased to offer this product for the first time this season in packets of 6, 176 gram (44g CA) for \$75.90 + GST per packet.

BENEFITS: Transition™ Calcium Boluses contain both immediate & sustained release calcium to help combat milk fever & other common metabolic complications before they start.

Calcium Boluses include three proven sources of calcium: Calcium Chloride, Calcium Propionate, Calcium Carbonate, Vitamin D is also introduced to help the absorption & metabolism of calcium and phosphorus.

For more details on the product and administering it, go to www.TransitionBolus.com



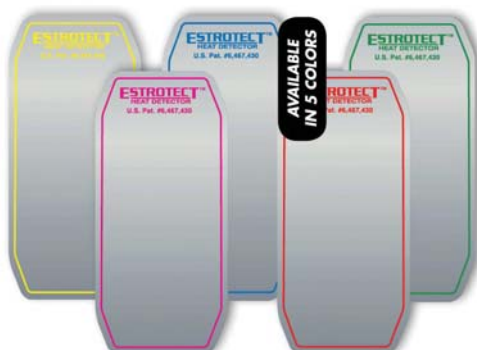
ESTROTECT™ HEAT DETECTOR

Estroprotect have been in NZ for some years now and are proving to be a very successful product to identify cows in heat correctly.

For the first time, Genetic Enterprises can also offer this product direct to clients, so please enquire about them when you are speaking with your GE consultant.

Estroprotects come in packets of 50 and are available in five different fluorescent colours, they are very easy to use and for your part you only need to ensure they are warmed up to at least body temperature, the application area is free of loose hair and dirt and that you apply it in the correct area across the spine.

Clear & helpful instructions are written on the back of each packet to assist you – try them you won't be disappointed.



**Don't Forget Estroprotect™
this Breeding Season**



GENETICS AUSTRALIA TRAIT LEADERS - JERSEY

GA PROTEIN	GA UDDERS	GA BPI
Levigenes 28 (g)	Valin 115 (g)	Tahbilk 347
Griff 28 (g)	Buzzbox 115 (g)	Levigenes 319 (g)
Voyagedale 26 (g)	Tahbilk 111	Borat 298 (g)
Algernon 26 (g)	Raceway 110	Vicks 276 (g)
Sega 26	Griff 110 (g)	Seahorse 270 (g)
Borat 24 (g)	Coleman 110 (g)	Roundhill 234
Ainsley 22 (g)	Seahorse 108 (g)	Raceway 220
Drogo 20 (g)	Vicks 108 (g)	Aussiegold 207
GA F & L	GA DTR FERTILITY	GA TYPE
Buzzbox 105 (g)	Roundhill 107	Valin 115 (g)
Raceway 104	Aberian 106	Buzzbox 114 (g)
Aberian 103	Griff 102 (g)	Tahbilk 110
Baymax 103 (g)	Seahorse 102 (g)	Aussiegold 110
Voyagedale 103 (g)	Baymax 102 (g)	Seahorse 108 (g)
Valin 101 (g)	Algernon 102 (g)	Vicks 108 (g)
Gainful 100	Voyagedale 101(g)	Griff 108 (g)
Borat 100 (g)	Tahbilk 100	Coleman 108 (g)
GA SCC	GA BODY DEPTH	GA LONG
Aussiegold 139	Sega 112	Valin 110 (g)
Gainful 138	Valin 109 (g)	Tahbilk 109
Valin 122 (g)	Ainsley 108 (g)	Vicks 109 (g)
Larfalot 119	Gainful 105	Buzzbox 108 (g)
Sega 114	Levigenes 105 (g)	Seahorse 108 (g)
Vicks 112 (g)	Roundhill 105	Aussiegold 106
Voyagedale 111 (g)	Raceway 104	Drogo 106
Coleman 108 (g)	Algernon 104 (g)	Ainsley 106 (g)
Buzzbox 106 (g)	Larfalot 105	Coleman 106 (g)

GROUP OF TAHBILK DAUGHTERS



Beulah **TAHBILK**

16/03/2012

Sire: Pannoo Abe Vanahlem
Dam: Beulah Navara M Poppins
MGS: Navara
aAa: 243615

Genetocs
AUSTRALIA

314756

\$28

Can be included
in a pack

A2A2

✓ OUTCROSS

BPI ^{71%}	HWI ^{62%}	TWI ^{69%}
347	262	380

AUGUST 2016

PROTEIN _{KG}	PROTEIN%	FAT _{KG}	FAT%
19	0.47	50	1.02
MILK _{ltr}	RELIABILITY%	DTRS	HERDS
-79	92%	72	22

COMPOSITES		DAIRY STRENGTH	
Overall Type	110	Stature	104
Mammary System	111	Bone Quality	104
MAMMARY TRAITS		Angularity	103
Udder Texture	105	Muzzle Width	103
Udder Depth	102	Body Depth	103
Fore Attach	105	Chest Width/Strength	103
Rear Att Height	103	RUMP	
Rear Att Width	110	Pin Width	109
Cent Ligament	108	Pin Set	105
Teat Place Front	108	Loin Strength	104
Teat Place Rear	105	FEET & LEGS	
Teat Length	101	Foot Angle	98
		Rear Leg Set	101
		Rear Leg Rear View	107

**NO. 1 BPI BULL IN
AUSTRALIA & NO. 2 FOR
TYPE AND HEALTH**



HEALTH & FITNESS

SURVIVAL	109
CELL COUNT	95
DAUGHTER FERTILITY	100
MILKING SPEED	103
TEMPERAMENT	107
LIKEABILITY	106

18 DTRS | 6 HERDS | 67% REL



New No 1
BPI
Type
Udders
Longevity



TAHBILK DAUGHTERS



TAHBILK BULL



Aberdeen Valarian Sandown ET
RACEWAY

05/03/2009

Sire: Kaarmona Valarian

Dam: Nowell Power Sandy ET Sup 92

MGS: Claydon Park Flower Power

MGD: Nowell Taranak Sandra ET VHC 90

aAa: 516342


 SEXED SEMEN
 \$POA


OUTCROSS

BPI85%	HWI77%	TWI84%
220	168	233



RACEWAY IVAN 28

87 DTRS | 36 HERDS | 82% REL | AUGUST 2016

PROTEIN _{KG}	PROTEIN%	FAT _{KG}	FAT%
17	0.32	22	0.34
MILK _{ltr}	RELIABILITY%	DTRS	HERDS
70	97%	196	61

TYPE	
OVERALL TYPE	107
UDDER OVERALL	110
CENT LIGAMENT	106
TEAT PLACEMENT FRONT	103
TEAT PLACEMENT REAR	112
TEAT LENGTH	92
STATURE	100


HEALTH & FITNESS

SURVIVAL	103
CELL COUNT	89
DAUGHTER FERT	100
MILKING SPEED	104
TEMPERAMENT	104
LIKEABILITY	105

85 DTRS | 33 HERDS | 81% REL


 BPI/TWI
 Udders
 Capacity
 Temperament
 Milking Speed

Broadlin
AUSSIEGOLD P

08/04/2011

Sire: Cairnbrae Jaces Elton

Dam: Broadlin Constance 2565 P EX91

MGS: Pannoo Abe Vanahlem

MGD: Broadlin Constance 2122

aAa: 243165



OUTCROSS

BPI83%	HWI75%	TWI83%
207	135	242



COLNARCO IMPULSE 12TH

197 DTRS | 58 HERDS | 97% REL | AUGUST 2016

PROTEIN _{KG}	PROTEIN%	FAT _{KG}	FAT%
14	0.29	26	0.49
MILK _{ltr}	RELIABILITY%	DTRS	HERDS
7	97%	197	58

TYPE	
OVERALL TYPE	110
UDDER OVERALL	106
CENT LIGAMENT	102
TEAT PLACEMENT FRONT	105
TEAT PLACEMENT REAR	97
UDDER TEXTURE	105
UDDER DEPTH	100
REAR ATT. HEIGHT	104
PIN WIDTH	109
STATURE	106


HEALTH & FITNESS

SURVIVAL	106
CELL COUNT	139
DAUGHTER FERT	99
MILKING SPEED	101
TEMPERAMENT	105
LIKEABILITY	104

93 DTRS | 33 HERDS | 82% REL


 TWI
 Type
 Udders
 Temperament
 Longevity

Bushlea RV

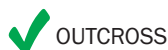
CASUAL/CASPIAN

12/08/2014

Sire: Sugar Grove Valentino Axis

Dam: 116541439

MGS: BW Legion

 Reduced
to \$18
for order
of 25 or
more


OUTCROSS



BUSHLEA RV CASUAL

0 DTRS | 0 HERDS | 73% REL

PROTEIN _{lbs}	PROTEIN%	FAT _{lbs}	FAT%
66	-0.02	36	-0.08
MILK _{lbs}	RELIABILITY%		
1092	74%		

SOURCE: AMERICAN JERSEY ASSOCIATION

TYPE	
BODY DEPTH	0.8
RUMP SIDE VIEW	1.1
RUMP WIDTH	1.5
REAR LEG SIDE VIEW	-0.3
FOOT ANGLE	0.5
STRENGTH	1.80
FORE UDDER	2.3
REAR UDDER HEIGHT	1.6
REAR UDDER WIDTH	0.6
SUSPENSORY LIGAMENT	0.1
UDDER DEPTH	2.3
TEATS (FRONT VIEW)	0.4
TEAT LENGTH	0.4
STATURE	3.30
SOMATIC CELL	2.8


 Supertype
Udders
Capacity
Longevity
SCS

 Can be included
in a pack

Lightwood Lucrative

LARFALOT


OUTCROSS

15/07/2004

Sire: Royals Green Elmo

Dam: Lightwood Amber 1 VHC90

MGS: Berretta

aAa: 543162

BPI _{93%}	HWI _{86%}	TWI _{93%}
182	116	212



LARFALOT DAUGHTER

437 DTRS | 152 HERDS | 97% REL | AUGUST 2016

PROTEIN _{KG}	PROTEIN%	FAT _{KG}	FAT%
10	0.36	34	0.85
MILK _{ltr}	RELIABILITY%	DTRS	HERDS
-208	99%	2568	337

TYPE	
OVERALL TYPE	107
UDDER OVERALL	104
CENT LIGAMENT	98
TEAT PLACEMENT FRONT	100
TEAT PLACEMENT REAR	96
TEAT LENGTH	95
REAR UDDER HEIGHT	
REAR UDDER WIDTH	
STATURE	103



HEALTH & FITNESS

SURVIVAL	104
CELL COUNT	119
DAUGHTER FERT	97
MILKING SPEED	101
TEMPERAMENT	102
LIKEABILITY	102

1375 DTRS | 204 HERDS | 98% REL


 TWI
Type
Udders
Longevity
SCS

Aberdeen Valarian ROUNDHILL-ET

11/03/2009

Sire: Kaarmona Valarian

Dam: Nowell Power Sandy SUP 92

MGS: Flower Power

aAa: 516342

AUGUST 2016

PROT _{kgs}	PROT%	FAT _{kgs}	FAT%
12	0.45	29	0.83
MILK _{kgs}	REL%	DTRS	HERDS
-270	93%	80	36

TYPE	
OVERALL TYPE	105
UDDER OVERALL	104
TEAT PLACEMENT FRONT	100
TEAT PLACEMENT REAR	100
TEAT LENGTH	103
STATURE	104

Genetocs
AUSTRALIA

✓ OUTCROSS

316719

\$18

Can be included
in a pack

A2A2

HEALTH & FITNESS

SURVIVAL	104
CELL COUNT	90
DAUGHTER FERT	107
MILKING SPEED	102
TEMPERAMENT	102
LIKEABILITY	102

42 DTRS | 22 HERDS | 70% REL



BPI/TWI Fertility
Type Components
Udders

BPI ^{78%}	HWI ^{70%}	TWI ^{77%}
234	176	213



ROUNDHILL

Araluen Park SEAHORSE

06/03/2015

Sire: Navarian

Dam: Araluen Park Tbone Sandra 3 87-2yr

MGS: Tbone

aAa: 156324

PROT _{kgs}	PROT%	FAT _{kgs}	FAT%
16	0.35	32	0.64
MILK _{kgs}	REL%	DTRS	HERDS
-24	70%	0	0

TYPE	
OVERALL TYPE	108
UDDER OVERALL	108
REAR ATTACH HEIGHT	1020
TEAT PLACEMENT FRONT	107
TEAT PLACEMENT REAR	107
TEAT LENGTH	107
STATURE	106

Genetocs
AUSTRALIA

✓ OUTCROSS

Genomic Sire

316732

\$22

Can be included
in a pack

A2A2

HEALTH & FITNESS

SURVIVAL	108
CELL COUNT	98
DAUGHTER FERTILITY	102
MILKING SPEED	102
TEMPERAMENT	102
LIKEABILITY	103

0 DTRS | 0 HERDS | 54% REL



BPI/TWI Longevity
Type SCS
Udders

BPI ^{56%}	HWI ^{49%}	TWI ^{54%}
270	204	294



SEAHORSE BULL

BAYMAX Beulah Brax 7289

21/08/2014

Sire: Brax

Dam: Beulah Val B Halo 86-2yr

MGS: Valerian

aAa: 615243

PROT _{kgs}	PROT%	FAT _{kgs}	FAT%
16	-0.21	14	-0.51
MILK _{kgs}	REL%	DTRS	HERDS
772	69%	0	0

TYPE	
OVERALL TYPE	107
UDDER OVERALL	107
REAR ATTACH HEIGHT	105
TEAT PLACEMENT FRONT	104
TEAT PLACEMENT REAR	104
TEAT LENGTH	97
STATURE	105

Genetocs
AUSTRALIA

✓ OUTCROSS

316735

\$22

Genomic Sire

A2A2

HEALTH & FITNESS

SURVIVAL	106
CELL COUNT	94
DAUGHTER FERTILITY	102
MILKING SPEED	100
TEMPERAMENT	105
LIKEABILITY	105

0 DTRS | 0 HERDS | 50% REL



Type Temperament
Udders SCS
Capacity

BPI ^{54%}	HWI ^{47%}	TWI ^{52%}
146	118	166



DAM OF BAYMAX SIRE - BRAX

Broadlin **BUZZBOX**

08/08/2014

Sire: All Lynns Louie Valentino
Dam: Broadlin Vanessa 2950 VG88
MGS: Raceway
aAa: 135246

0 DTRS | 0 HERDS | 48 REL%

PROT _{kg}	PROT%	FAT _{kg}	FAT%
17	0.13	34	0.31
MILK _{kg}	REL%	DTRS	HERDS
326	71%	0	0

TYPE	
OVERALL TYPE	114
UDDER OVERALL	115
TEAT PLACEMENT FRONT	106
TEAT PLACEMENT REAR	110
TEAT LENGTH	97
REAR ATT HEIGHT	109
STATURE	107

Genetocs
AUSTRALIA

Genomic Sire

BPI _{58%}	HWI _{52%}	TWI _{57%}
246	189	314



HEALTH & FITNESS

SURVIVAL	108
CELL COUNT	106
DAUGHTER FERTILITY	100
MILKING SPEED	104
TEMPERAMENT	104
LIKEABILITY	106

0 DTRS | 0 HERDS | 55% REL

316733 \$16

Can be included
in a pack

A2A2



BUZZBOX BULL

King View **VALIN** 4697

18/01/2015

Sire: All Lynns Louie Valentino
Dam: Kings View Aileen 105 86-2yr
MGS: Navara
aAa: 156324

0 DTRS | 0 HERDS | 46 REL%

PROT _{kg}	PROT%	FAT _{kg}	FAT%
18	0.09	36	0.28
MILK _{kg}	REL%	DTRS	HERDS
396	68%	0	0

TYPE	
OVERALL TYPE	115
UDDER OVERALL	115
TEAT PLACEMENT FRONT	109
TEAT PLACEMENT REAR	108
TEAT LENGTH	96
REAR ATT HEIGHT	108
STATURE	107

Genetocs
AUSTRALIA

Genomic Sire

BPI _{56%}	HWI _{50%}	TWI _{54%}
266	211	344



HEALTH & FITNESS

SURVIVAL	110
CELL COUNT	122
DAUGHTER FERTILITY	100
MILKING SPEED	104
TEMPERAMENT	105
LIKEABILITY	106

0 DTRS | 0 HERDS | 53% REL

316734 \$20

Can be included
in a pack

A2A2



VALIN BULL

Beulah Brax **AINSLEY**

31/03/2015

Sire: Pannoo Brax
Dam: Beulah Konui K Poppins VG88
MGS: Konui
aAa: 156342

0 DTRS | 0 HERDS | 35 REL%

PROT _{kg}	PROT%	FAT _{kg}	FAT%
22	0.30	34	0.40
MILK _{kg}	REL%	DTRS	HERDS
235	69%	0	0

TYPE	
OVERALL TYPE	108
UDDER OVERALL	108
TEAT PLACEMENT FRONT	102
TEAT PLACEMENT REAR	102
TEAT LENGTH	99
REAR ATT HEIGHT	106
STATURE	102

Genetocs
AUSTRALIA

Genomic Sire

BPI _{53%}	HWI _{45%}	TWI _{50%}
262	189	292



HEALTH & FITNESS

SURVIVAL	106
CELL COUNT	100
DAUGHTER FERTILITY	98
MILKING SPEED	102
TEMPERAMENT	105
LIKEABILITY	106

0 DTRS | 0 HERDS | 48% REL

316776 \$22

Can be included
in a pack

A2A2



AINSLEY BULL

Broadlin Hilux **ALGERNON**

Sire: Colnarco Navarian
Dam: Broadlin Vanessa 2950 VG88
MGS: Raceway
aAa: 156324

0 DTRS | 0 HERDS | 39 REL%

PROT _{kg}	PROT%	FAT _{kg}	FAT%
26	0.58	31	0.60
MILK _{kg}	REL%	DTRS	HERDS
-13	68%	0	0

TYPE	
OVERALL TYPE	104
UDDER OVERALL	108
TEAT PLACEMENT FRONT	105
TEAT PLACEMENT REAR	107
TEAT LENGTH	102
REAR ATT HEIGHT	106
STATURE	102

Genetocs
AUSTRALIA

Genomic Sire

BPI _{52%}	HWI _{46%}	TWI _{51%}
318	230	312



HEALTH & FITNESS

SURVIVAL	105
CELL COUNT	99
DAUGHTER FERTILITY	102
MILKING SPEED	102
TEMPERAMENT	102
LIKEABILITY	104

0 DTRS | 0 HERDS | 50% REL

316777 \$22

Genomic Sire Can be included
in a pack



DAM OF ALGERNON

Tower Vue Prime **TEQUILA-ET**

Primetime x Sambo

02/06/2005

Sire: Gil-Bar Sparkler Primetime

Dam: Pleasant Nook Sambo Teal EX-94% T

MGS: Lester Sambo

MGD: Pleasant Nook Regal Teal VG-87%

aAa: 234165

**ONE OF THE
HOTTEST TYPE
BULLS IN THE
WORLD**



DAUGHTER MAC N CHEESE

2617 DTRS | 919 HERDS | 68% US | USDA INDEX DECEMBER 2016

MILK _{kg}	FAT _{kg}	FAT%
-1618	-29	0.27
PROT _{kg}	PROT%	SCS
-38	0.11	3.32

	-2	-1	0	+1	+2	
Stature					3.40	TALL
Strength					0.90	STRONG
Dairy Form					0.80	OPEN RIB
Rump Angle					-0.40	HIGH PINS
F. Udder Attachment					1.70	STRONG
Rear Udder Height					1.20	HIGH
Rear Udder Width					0.60	WIDE
Udder Cleft					0.80	STRONG
Udder Depth					3.30	SHALLOW
Front Teat Placement					1.00	CLOSE
Teat Length					1.60	SHORT



HEALTH & FITNESS

FERTILITY INDEX	-3.9
LIVEABILITY	-4.9
SOMATIC CELL	3.32



Type
Udders
Style
Legs & Feet
SCS



TEQUILA-ET

A2A2

Cairnbrae **VALBONE**

Valentino x Tbone x Alf

06/04/2013

Sire: All Lynns Louie Valentino

Dam: Cairnbrae Tbone Estelle 91EXC

MGS: Richies Jace Tbone

MGD: Cairnbrae Alfs Estelle VHC93



BPI _{60%}	HWI _{53%}	TWI _{58%}
178	125	242



VALBONE GRAND DAM

0 DTRS | 0 HERDS | 68% REL | AUGUST 2016

PROTEIN _{KG}	PROTEIN%	FAT _{KG}	FAT%
15	0.11	29	0.1
MILK _{ltr}	PROTEIN%	ASI	REL %
436	0.01	113	73

TYPE	
OVERALL TYPE	112
UDDER OVERALL	113
STATURE	110
CENT LIGAMENT	106
TEAT PLACEMENT FRONT	110
TEAT PLACEMENT REAR	105
TEAT LENGTH	102



HEALTH & FITNESS

SURVIVAL	108
CELL COUNT	114
DAUGHTER FERT	98
MILKING SPEED	102
TEMPERAMENT	103
LIKEABILITY	105



Super Type
Udders
Capacity
Rump
Components



ALL LYNNS LOUIS VALENTINO



313710

\$18



OUTCROSS

Potterswalls **STARBUCK**

Allstar x Ex94(3) Juno x Ex90 Prize x Ex90 Renaissance

02/02/2011

Sire: Sunset Canyon Anthems Allstar ET

Dam: Potterswall Junos Glamour 2 ET

MGS: Potterswall Lord Juno EX 93

aAa: 153



DTR: POTTERSWALLS STARBUCK ELISHA VG86

PRODUCTION 113 DTRS | 60 HERDS | DECEMBER 2016 | SOURCE UK

MILK _{kgs}	FAT _{kgs}	FAT%
-63	11.3	0.27
PROT _{kgs}	PROT%	REL%
3.1	0.10	94

	-2	-1	0	+1	+2	
UK Type Merit					0.60	EXCELLENT
Mammary					0.50	EXCELLENT
UK Feet & Legs					0.60	EXCELLENT
Stature					1.10	160 CM
Chest Width					1.30	WIDE
Body Depth					0.40	DEEP
Angularity					0.30	OPEN RIB
Rump Angle					0.30	LOW PINS
Rump Width					1.10	WIDE
Rear Leg Side					1.30	STRAIGHT
Foot Angle					-0.50	STEEP
Fore Udder Attach					-0.50	TIGHT
Rear Udder Height					1.30	VERY HIGH
Udder Support					1.30	STRONG
Udder Depth					-0.90	20CM ABOVE
Front Teat Placement					0.50	CLOSE
Teat Length					-0.50	LONG
Teat Position Side					0.60	APART
Locomotion					0.50	EXCELLENT

83% REL



HEALTH & FITNESS

FERTILITY INDEX	0.10
LIFESPAN	0.20
CALVING EASE	N/A
MILKING SPEED	-0.40
TEMPERAMENT	-0.10
SOMATIC CELL	11



Udders
Components
Longevity
Legs & Feet
Locomotion



314765

\$16



OUTCROSS

Kauri Glen HG **TORNADO**

10/09/2013

Sire: Heaths Hired Gun (USA +1.10 PTAT, +21.46 MAM)

Dam: Brunchilli Sambo Tammy eX-93 (Sire: Lester Sambo)

MGD: Brunchilli Jade Tammy eX-90 (Sire: Belles Jade)



DAM: BRUNCHILLI SAMBO TAMMY EX 93 - IDW & SYDNEY ROYAL CHAMPION

MATERNAL SISTER: RIVENDELL
VOLTAGE TAMMY VG 87NSW STATE
SHOW RESERVE INTERMEDIATE
CHAMPIONFAMILY MEMBER: RIVENDELL
JADESTORM TAMMI EX 91NSW STATE
SHOW CHAMPION & NSW QLD ON
FARM CHAMPION**Sire: HEATHS HIRED GUN (USA +1.0 PTAT, +18.30 MAM)****Dam: BRUNCHILLI SAMBO TAMMY EX-93 (Sire Lester Sambo)**

3.0yr 5263L 245kgF 4.66% 209kgP 3.97% 304d

4.1yr 6599L 315kgF 4.77% 263kgP 3.99% 287d

5.1yr 6744L 314kgF 4.66% 251kgP 3.72% 305d

6.0yr 9548L 454kgF 4.75% 373kgP 3.91% 305d

8.1yr 7270L 345kgF 4.75% 268kgP 3.69% 305d

1st 6yr in-milk & Best Udder in class

SENIOR CHAMPION COW, IDW 2009

1st Mature Cow & Senior Champion Jersey

Supreme Best Udder All Breeds Berry Show 2009

Supreme Best Udder & SENIOR Champion Cow, Sydney Royal, 2011

Sisters to TORNADO;

Rivendell Visionary Toffee Ex - 90, 3.0yr 5,755L 317kgF 5.51% 209kgP 3.63% 305d

Rivendell Voltage Tammy Ex - 91, 2.0yr; 6337L 274kgF, 4.32% 226kgP 3.57% 305d

Rivendell Tequila Tuesday VG, Reserve Junior Champion All Breeds, Nowra Show, 2015

MGD: Brunchilli Jade Tammy EX-90 (Sire: Belles Jade)

MA 9,307L 316kgP 3.40% 387kgF 4.16% 305d

A tremendous production cow, 5 consecutive lactations over 7500 litres!

Show Winners
Production
Longevity
Udders
Capacity

Ribblesdale **BEAUMONT**

DJ Broiler x Ex92(3) Sultan x Ex93(5) Fyn Lemvig x Ex93(3) Egely

15/07/2012

Sire: Danish DJ Broiler

Dam: Ribblesdale Sultan Clarissa

aAa: 564

DECEMBER 2016

MILK _{kgs}	FAT _{kgs}	FAT%
20	4.1	0.08
PROT _{kgs}	PROT%	REL%
6.7	0.12	43



Type
Udders
Longevity



SEXED SEMEN
\$POA



OUTCROSS



315730

\$18

Genomic Sire

A2A2



RIBBLESDALE BEAUMONT



DAM OF BEAUMONT

Sunnydawn **OLYMPIAN**

DJ Zuma x Paramount latola x Sultan JH1C

23/04/2013

Sire: Danish DJ Zuma

Dam: Sunnydawn latola Long Jumpa

aAa: 435

DECEMBER 2016

MILK _{kgs}	FAT _{kgs}	FAT%
221	13.2	0.04
PROT _{kgs}	PROT%	REL%
10.6	0.05	42



Type
Udders
Longevity



OUTCROSS

315726

\$18

Genomic Sire



SUNNYDAWN OLYMPIAN



DAM OF OLYMPIAN

Tregibby **YEGABOMB**

Tequila x Excitation x Starlight Commander

02/04/2014

Sire: Tower Vue Prime Tequila ET

Dam: Bluegrass Excitations Prissy Polly

aAa: 462

DECEMBER 2016

MILK _{kgs}	FAT _{kgs}	FAT%
46	-1.9	-0.07
PROT _{kgs}	PROT%	REL%
-0.20	-0.03	42



Type
Udders
Longevity



SEXED SEMEN
\$POA



OUTCROSS



316716

\$16

Genomic Sire



TREGIBBY YEGABOMB



DAM: BLUEGRASS EXCITATIONS PRISSY POLLY EX93(2)

Enniskillen **ENGINEER 401**

Premier x Vincent x Respect

09/06/2015

Sire: Hawarden Impuls Premier

Dam: Enniskillen BV Suzy EX93

2nd Dam: Enniskillen Respect Suzy

PRODUCTION O DTRS | O HERDS | DECEMBER 2016

SOURCE CDN

MILK _{kgs}	FAT _{kgs}	FAT%
-13	6.2	0.04
PROT _{kgs}	PROT%	REL%
1.8	0.04	



Type
Longevity

Udders
Capacity



OUTCROSS

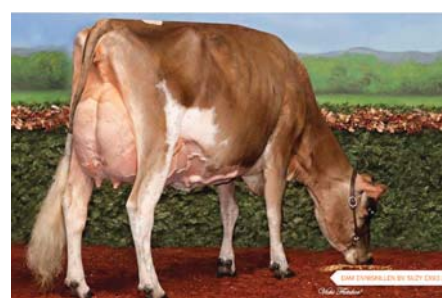
317700

\$28

Genomic Sire



2ND DAM ENNISKILLEN RESPECT SUZY



DAM ENNISKILLEN BV SUZY EX93

SUPPLEMENTARY DAIRY SIRE LIST 2017

All prices are GST exclusive

JERSEY SIRES		aAa	A2	\$	PACK
306719	Beulah Taranak Badger			\$18.00	
314757	Brookbora T Bone Borat (g)	543612	A2A2	\$18.00	
314739	Broadlin Levi (Levigenes) (g)	453621	A1A2	\$18.00	\$15.00
313711	Lagangreen Roy Boy			\$12.00	
315727	Wallacedale Mels Voyagedale (g)		A1A2	\$18.00	
316775	Brookbora Coleman (g)		A2A2	\$17.00	\$8.00
315728	Kaddy Larfalot Segal		A2A2	\$15.00	
316717	Beulah Brax Drogo (g)	435216	A1A2	\$24.00	
316718	Kaaramona Griffin (Griff)	423561	A1A2	\$24.00	
316774	Stonyrun Aus Tbone Vicks (g)		A2A2	\$16.00	\$8.00
316773	Beulah S Hatman Huxley (g)		A2A2	\$16.00	\$8.00

BUDGET SEMEN available from \$5 - \$10

For more semen please refer to our website
www.geneticenterprises.co.nz

DAIRY BEEF SEMEN AVAILABLE

\$

Angus	\$8.00	Murray Grey	\$8.00
Beef Shorthorn	\$8.00	Piedmontese	\$8.00
Belgian Blue	\$8.00	Red Poll	\$8.00
Belted Galloway	\$12.00	Shaver Beef	\$8.00
Blonde De Aquitaine	\$8.00	Simmental	\$8.00
Charolais	\$8.00	Speckle Park	\$15.00
Hereford	\$8.00	Wagyu	\$8.00
Miniature Hereford	\$12.00		



Hilltown **OBLIQUE** 100%

Jelyca Oblique x Ex94 (4) Triple Crown x Ex90(3) Reef

20/12/2010

Sire: Jelyca Oblique

Dam: Hilltown Snowball 466 EX94(4) LP60

2nd Dam: Hilltown Snowball 194(3) LP60 3

aAa: 546132

PRODUCTION DECEMBER 2016 | 73% REL

MILK _{kgs}	FAT _{kgs}	FAT%
108	12.1	0.12
PROT _{kgs}	PROT%	REL%
7.5	0.06	89



HEALTH & FITNESS

FERTILITY INDEX	6.1	HIGH
LIFESPAN	0.4	HIGH
CALVING EASE	N/A	AVERAGE
MILKING SPEED	-0.4	DIFFICULT
TEMPERAMENT	0.3	PLACID
SOMATIC CELL	-10	IMPROVER



DAUGHTER: BUTTERBESLEY OBLIQUE MAY

	-2	-1	0	+1	+2	
Type Merit					1.30	EXCELLENT
Mammary					1.00	EXCELLENT
Feet & Legs					0.70	EXCELLENT
Stature					-0.80	154 CM
Chest Width					0.10	WIDE
Body Depth					-0.60	DEEP
Angularity					-1.00	OPEN RIB
Rump Angle					0.30	LOW PINS
Rump Width					0.80	WIDE
Rear Leg Side					-0.10	SICKLED
Foot Angle					-0.30	STEEP
Fore Udder Attach					1.50	TIGHT
Rear Udder Height					-0.20	VERY HIGH
Udder Support					0.40	STRONG
Udder Depth					0.50	20CM ABOVE
Front Teat Placement					0.90	CLOSE
Teat Length					-1.10	LONG
Teat Position Side					0.30	APART



513682

\$20

Sandyford **TRICLO**

Reality x Chatter x Egan

19/02/2014

Sire: Palmyra Tri-Star Reality

Dam: Sandyford Clover 10 EX97

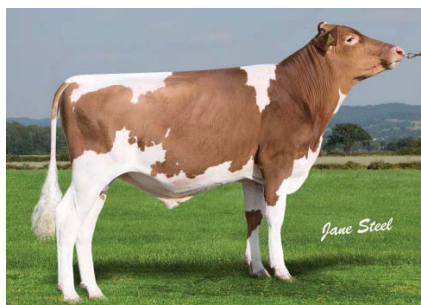
2nd Dam: Sandyford Clover 7 VG85

PRODUCTION DECEMBER 2016 | 73% REL

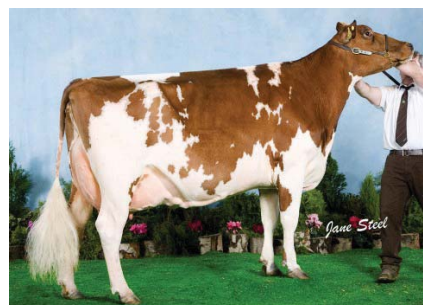
MILK _{kgs}	FAT _{kgs}	FAT%
380	10.4	-0.08
PROT _{kgs}	PROT%	REL%
7.9	-0.07	41



Type
Udders
Longevity
Capacity



SANDYFORD TRICLO



DAM SANDYFORD CLOVER



515618

\$18

Genomic Sire



SEXED SEMEN
\$POA



OUTCROSS

Sandyford **SUPREME**

Blackthorn x Chatter x Egan

20/02/2014

Sire: Rosehill Blackthorn

Dam: Sandyford Clover 10 EX97

2nd Dam: Sandyford Clover 7 VG85

PRODUCTION DECEMBER 2016

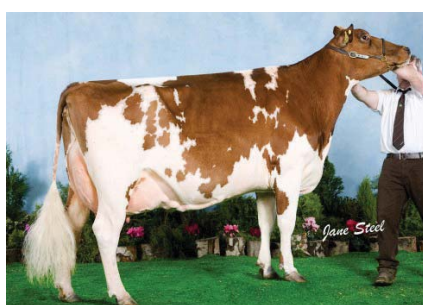
MILK _{kgs}	FAT _{kgs}	FAT%
83	-0.10	-0.05
PROT _{kgs}	PROT%	REL%
2.3	0.00	42



Type
Udders
Longevity
Capacity



SANDYFORD SUPREME



DAM SANDYFORD CLOVER



515617

\$18

Genomic Sire



SEXED SEMEN
\$POA



OUTCROSS



515624

\$18



OUTCROSS

HAREFOOT SIMPLY PERFEK VG87

Remington x Simply Red x Heligo

25/07/2010

Sire: Mapleburn Remington

Dam: Haresfoot Simply Red Pamela



DTR COOMBE PERFEK PEACH

PRODUCTION DECEMBER 2016 | 58% REL

MILK _{kgs}	FAT _{kgs}	FAT%
190	2.3	-0.10
PROT _{kgs}	PROT%	REL%
2.3	-0.06	94

	-2	-1	0	+1	+2	
Type Merit					1.30	EXCELLENT
Mammary					1.60	EXCELLENT
Feet & Legs					0.70	EXCELLENT
Stature					1.20	154 CM
Body Depth					1.10	DEEP
Rump Angle					0.30	LOW PINS
Rump Width					1.40	WIDE
Fore Udder Attach					-0.20	TIGHT
Rear Udder Height					2.00	VERY HIGH
Udder Support					2.40	STRONG
Front Teat Placement					0.00	CLOSE



DAM: HAREFOOT SIMPLY RED PAMELA

**HEALTH & FITNESS**

FERTILITY INDEX	-0.9	LOW
LIFESPAN	0.3	HIGH
CALVING EASE	N/A	AVERAGE
MILKING SPEED	-2.0	DIFFICULT
TEMPERAMENT	-0.6	POOR
SOMATIC CELL	12	NON-IMPROVER



Type
Udders
Longevity
Capacity



516617

\$30

Genomic Sire



OUTCROSS

Hunnington FAMOUS 100%

Prime X Easlad X Harvest Gold

07/05/2015

Dam: Hunnington Fragy 12 EX96 (5) , 6th Lact 9334 kgs in 305 days

3.7F%, 3.27P% / 2nd Dam is Hunnington Fragy 4 EX94(3) Lact 6 10231 kgs, 305 days 4.25F%, 3.19P%



DAM: HUNNINGTON FRAGY 12

PRODUCTION DTRS 0 HERDS 0 | DECEMBER 2016 | SOURCE UK

MILK _{kgs}	FAT _{kgs}	FAT%
51	0.9	-0.02
PROT _{kgs}	PROT%	REL%
2.3	0.02	39



HUNNINGTON FAMOUS



MATERNAL SISTER HUNNINGTON FRAGY 16



Type
Udders
100% Ayrshire
Capacity

Arran Tri **DANEHILL**

✓ OUTCROSS

05/08/2003

Sire: Ardrossan EV Kates Trident
Dam: Arran Vince Cassata EX
MGS: Burr Ayr Farms Wel Vincent
MGD: Arran Jewel B Cassata EX

165 DTRS | 44 HERDS | 89 REL%
DECEMBER 2016



DANEHILL WINNING 4YR AND HONOURABLE MENTION -
AYRSHIRE COW PLUS 3RD IN INTERBREED NZDE 2015

MILK _{kgs}	FAT _{kgs}	FAT%
-16	-21.1	93
PROT _{kgs}	PROT%	
-9.0	92	

TYPE	
UDDER OVERALL	0.49
DAIRY CAPACITY	-0.08
RUMP ANGLE	0.3
RUMP WIDTH	0.26
LEGS	0.07
DAIRY CONFORMATION	-0.02
UDDER SUPPORT	0.44
FRONT UDDER	0.28
REAR UDDER	0.35
FRONT TEAT	0.28
REAR TEAT	0.21
STATURE	0.91

37 DTRS INSPECTED



HEALTH & FITNESS

ADAPT TO MILKING	0.48
SHED TEMP	0.5
MILKING SPEED	0.33
FARMER OPINION	0.52
SOMATIC CELL	-0.13



Type
Udders
Capacity
Feet & Legs
Longevity
SCS

A2A2

Arran Admiral **VITALI**

✓ OUTCROSS

01/12/2011

Sire: Hunnington Admiral
Dam: Peakview Alfie Hetty
MGS: Kiteroa Cream Alfie
MGD: Peakview Brig Hattie



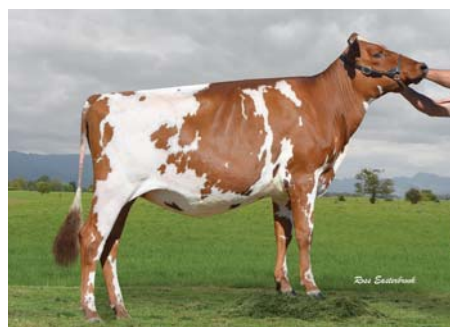
PEAKVIEW ALFIE HETTY

MILK _{kgs}	FAT _{kgs}	FAT%
9	2.3	-0.02
PROT _{kgs}	PROT%	REL%
-1.6	-0.03	41

Maternal Sister won the
NZ Dairy Event Interbreed
Championship 2015.
Vitali's Dam is one of NZ's
highest profiled Ayrshire
cows – Twice NZ Dairy
Event Supreme Ayrshire
Champion and finalist in
the Ayrshire world photo
competition.



Type
Udders
Capacity
Feet & Legs



ARRAN NEXUS HETTY - HALF SISTER

Beaulands **HILLY**

05/04/2009

Sire: Vest Delta 28

Dam: Beaulands Aks Katie Ex92

MGS: Fyn Aks

aAa: 516432

PROT _{kg}	PROT%	FAT _{kg}	FAT%
14	-0.10	19	-0.16
MILK _{kg}	REL%	DTRS	HERDS
714	94%	128	44

TYPE	
OVERALL TYPE	102
MAMMARY SYSTEM	102



Type
Udders
Capacity

Longevity
Temperament
SCS



OUTCROSS

Genetecs
AUSTRALIA

515562

\$18

Can be included
in a pack

A1A2

BPI _{80%}	HWI _{71%}	TWI _{78%}
94	66	77



HEALTH & FITNESS

SURVIVAL	103
CELL COUNT	90
DAUGHTER FERTILITY	98
MILKING SPEED	102
TEMPERAMENT	102
LIKEABILITY	103

81 DTRS | 89 HERDS | 33% REL



ARB HILLY BULL

Beaulands **OBAMA**

04/10/2008

Sire: O Brolin 1804

Dam: Beaulands Botans Matilda

MGS: Botans

aAa: 516432

PROT _{kg}	PROT%	FAT _{kg}	FAT%
18	0.25	8	-0.01
MILK _{kg}	REL%	DTRS	HERDS
203	94%	88	38

TYPE	
OVERALL TYPE	102
MAMMARY SYSTEM	100



BPI
Type
Longevity

Rump
Protein



OUTCROSS

Genetecs
AUSTRALIA

516694

\$20

Can be included
in a pack

A1A2

BPI _{77%}	HWI _{68%}	TWI _{74%}
179	134	187



HEALTH & FITNESS

SURVIVAL	106
CELL COUNT	88
DAUGHTER FERTILITY	101
MILKING SPEED	105
TEMPERAMENT	100
LIKEABILITY	103

79 DTRS | 74 HERDS | 25% REL



ARB OBAMA KENNA

Beaulands **DAIRYWEEK**

01/01/2012

Sire: V Foske

Dam: Beaulands Ascona Emerald

MGS: Ascona

aAa: 453621

PROT _{kg}	PROT%	FAT _{kg}	FAT%
16	0.06	22	0.02
MILK _{kg}	REL%	DTRS	HERDS
488	75%	15	6

TYPE	
OVERALL TYPE	102
MAMMARY SYSTEM	103



Type
Udders
Capacity

Components
Milking Speed
SCS



OUTCROSS

Genetecs
AUSTRALIA

515616

\$18

Can be included
in a pack

A2A2

BPI _{55%}	HWI _{47%}	TWI _{52%}
228	198	215



HEALTH & FITNESS

SURVIVAL	105
CELL COUNT	124
DAUGHTER FERTILITY	102
MILKING SPEED	102
TEMPERAMENT	102
LIKEABILITY	102

34 DTRS | 1 HERDS | 1% REL



ARB DAIRYWEEK BULL

Johville Park **SCAREBEAR**

22/08/2011

Sire: V Foske

Dam: Johville Park Krissy 708

MGS: Andersta

aAa: 543612

PROT _{kg}	PROT%	FAT _{kg}	FAT%
26	0.13	42	0.17
MILK _{kg}	REL%	DTRS	HERDS
719	84%	32	10

TYPE	
OVERALL TYPE	98
MAMMARY SYSTEM	98



BPI
Components
Capacity

Feet & Legs
SCS
Rump



OUTCROSS

Genetecs
AUSTRALIA

516695

\$18

Can be included
in a pack

A1A2

BPI _{61%}	HWI _{52%}	TWI _{58%}
278	222	224



HEALTH & FITNESS

SURVIVAL	105
CELL COUNT	115
DAUGHTER FERTILITY	104
MILKING SPEED	101
TEMPERAMENT	100
LIKEABILITY	102

30 DTRS | 7 HERDS | 3% REL



SCAREBEAR BULL

Cotonhall **TITAN****31/12/2011**

Sire: Cotonhall Colby

Dam: Cotonhall Tulip 2nd VG 87

Tulip 2nd: Lact 3 10440 kgs, 305 days, 4.28F%, 3.53P%

SIRE COTONHALL COLBY PRODUCTION

MILK _{kgs}	FAT _{kgs}	FAT%
159	-4.5	-0.18
PROT _{kgs}	PROT%	REL%
-0.60	-0.10	69



Dairy type
Strong feet & legs



DAM COTONHALL TULIP

GENETIC ENTERPRISES
WORLD CLASS GENETICS
NZ

513680

\$30

OUTCROSS



COTONHALL TITAN

Northbrook **MURDOCH ET****07/07/2014**

Sire: Kulp-Glen Jurist Ace ET

Dam: Oceanbrae N Missy

MGS: Haux

MGD: Strickley Lily 2nd

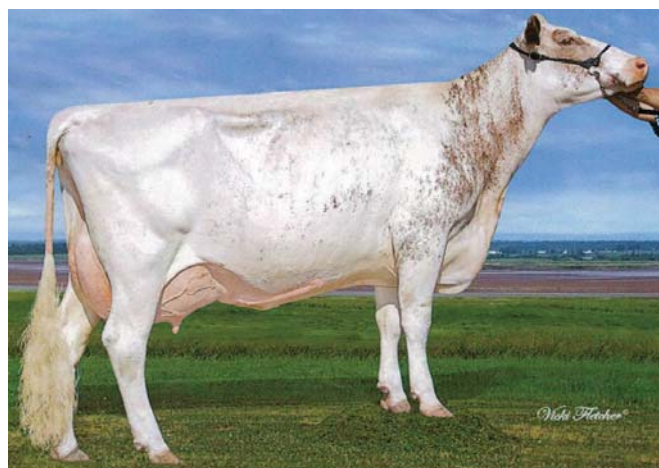
ET BULL FROM
A HIGH PROFILE
CANADIAN FAMILY



Type
Production
100% Shorthorn

GENETIC ENTERPRISES
WORLD CLASS GENETICS
NZ

515613

\$15OUTCROSS **Genomic Sire**

OCEANBRAE N MISSY EX 93-4E (DAM)

Northbrook **PLATO****31/03/2014**

Sire: Oceanbrae Logics Plato

Dam: Northbrook Bead MR2 VHC BW 43, PW 171

MGS: MR1 Te Kiripi Vsta Nat

MGD: MR2 Pinedale Beat VHC

FIRST SON OF THE
LEADING CANADIAN
SIRE OCEANBRAE
LOGICS PLATO
AVAILABLE IN NZ



Type
Longevity

GENETIC ENTERPRISES
WORLD CLASS GENETICS
NZ

515612

\$15**Genomic Sire**

DAM OF OCEANBRAE LOGICS PLATO

JACARANDA

31/03/2014

Sire: Gringo

Dam: Gentiane

aAa: 342516

REL 66% | DECEMBER 2016 | SOURCE FRANCE

MILK _{kgs}	FAT _{kgs}	FAT%
610	22	-0.9
PROT _{kgs}	PROT%	ISU
26	2.0	167

TYPE	
UDDER INDEX	2.2
TOTAL TYPE INDEX	1.6
UDDER BALANCE	1.5
FORE UDDER ATTACHMENT	1.2
REAR UDDER ATTACHMENT	2.1
FRONT TEAT PLACEMENT	2.2
FEET AND LEGS	0.5
CENT LIGAMENT	1.9
STATURE	0.0



HEALTH & FITNESS

UDDER HEALTH	1.9
LONGEVITY	1.5
FERTILITY	0.6
CALVING EASE	90
MILKING SPEED	-0.6
CELL COUNT	2.0



Udders
Longevity
Calving Ease
Type



516613

\$28

Genomic Sire

A2A2



DAM GENTIANE



JACARANDA BULL

BFG RIJEKA

31/01/2009

Sire: Rau

Dam: Litani

aAa: 432516

PRODUCTION DTRS 110 | DECEMBER 2015 | SOURCE GERMANY

MILK _{kgs}	FAT _{kgs}	FAT%
6845	277	4.04
PROT _{kgs}	PROT%	
242	3.54	

TYPE	
UDDER	115
PASTERNS	105
UDDER HEIGHT	106
BODY DEPTH	98
FORE UDDER ATTACHMENT	91
FRONT TEAT PLACEMENT	104
REAR TEAT PLACEMENT	105
CENT LIGAMENT	132



HEALTH & FITNESS

FITNESS	111
PRODUCTIVE LIFE	107
FERTILITY	100
CALVING EASE	100
MILKING SPEED	109
CELL COUNT	115



Dual purpose breed
Udders
Milking Speed



515635

\$28



RIJEKA BULL

NORMANDE

M/FLECKVIEH



Voelkers TD **CARTER**

TD x Wonderment x Migel

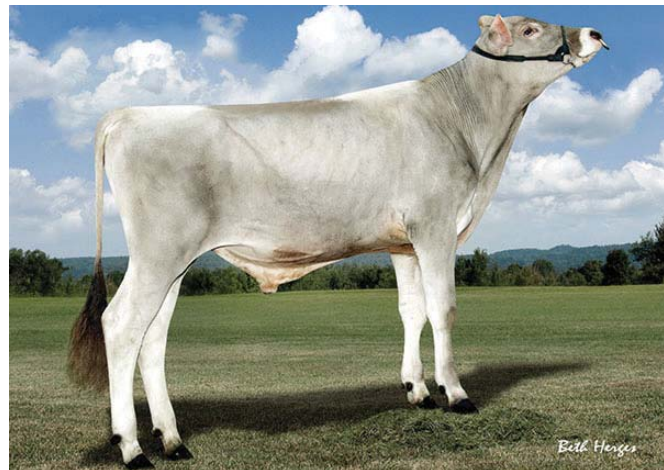
22/04/2010

Sire: Webster Ridge TD ET

Dam: Voelkers Wndrnt Carabella 'E 90'

MGD: Voelkers Migel Candid '3E-94'

aAa: 132546



CARTER

US PERFORMANCE DECEMBER 2016 | REL 95% | 282 DTRS
161 HERDS

MILK _{kgs}	FAT _{kgs}	FAT%
956	23	-0.07
PROT _{kgs}	PROT%	TYPE
21	-0.04	1.4

	-2	-1	0	+1	+2	
Stature					4.40	TALL
Strength					1.00	STRONG
Dairy Form					2.30	OPEN RIB
Rump Angle					0.00	SLOPED
Thurl Width					0.50	WIDE
Foot Angle					0.70	STEEP
Rear Leg Angle					0.60	SICKLE
Rear Leg Rear View					0.60	STRAIGHT
Fore Attachment					0.90	STRONG
Rear Udder Height					0.90	HIGH
Rear Udder Width					1.70	WIDE
Udder Depth					1.10	SHALLOW
Udder Cleft					0.20	STRONG
Teat Placement					2.10	CLOSE
Teat Length					-1.40	SHORT



HEALTH & FITNESS

CONCEPTION	N/A
MILKING SPEED	95
SOMATIC CELL	3.09
UDDER COMPOSITE	1.32



No 1 Type
Super Udders
Capacity

Genomic Sire



Jo Dee Nemo **RICHARD**

Nemo x Ensign x Banker

10/06/2013

Sire: Jo-Dee Prelude Nemo-ET *TM

Dam: Jo-Dee Ensign Rosebud '2E 93 E 92 MS'

MGD: Jo-Dee Banker Rose '2E 92 E 92 MS'

aAa: 453



RICHARD

G-CDCB PERFORMANCE DECEMBER 2016 | REL 64%

MILK _{kgs}	FAT _{kgs}	FAT%
689	4	-0.11
PROT _{kgs}	PROT%	TYPE
10	-0.05	1.3

	-2	-1	0	+1	+2	
Stature					2.40	TALL
Strength					0.70	STRONG
Dairy Form					1.90	OPEN RIB
Rump Angle					-0.80	SLOPED
Thurl Width					1.20	WIDE
Foot Angle					0.50	STEEP
Rear Leg Angle					-0.20	SICKLE
Rear Leg Rear View					0.50	STRAIGHT
Fore Attachment					1.10	STRONG
Rear Udder Height					2.90	HIGH
Rear Udder Width					1.50	WIDE
Udder Depth					1.30	SHALLOW
Udder Cleft					1.20	STRONG
Teat Placement					0.40	CLOSE
Teat Length					0.60	SHORT



HEALTH & FITNESS

CONCEPTION	N/A
SOMATIC CELL	2.95
UDDER COMPOSITE	1.71



Type
Udders
Health Traits

Shiloh Brookings **CADENCE ET**

NEW GENERATION
GENETICS

516555

\$28

Brookings x Wonderment x Pronto

15/01/2012

Sire: R N R Payoff Brookings

Dam: Sunmade SD Wonder Buffy ET 'V 88'

MGD: Front Line Pronto Bounty ET 'E 90'

aAa: 156

G-CDCB PERFORMANCE DECEMBER 2016

REL 91% | 101 DTRS | 50 HERDS

MILK _{kgs}	FAT _{kgs}	FAT%
1144	49	0.1
PROT _{kgs}	PROT%	TYPE
44	0.02	1.20



HEALTH & FITNESS

CONCEPTION	1.40
MILKING SPEED	109
SOMATIC CELL	2.80
UDDER COMPOSITE	0.99



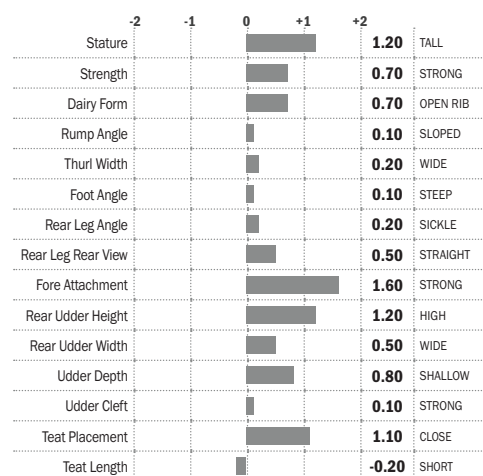
CADENCE



Type
Production
Longevity
Components
Rump



SEXED SEMEN
\$POA



BMG Lust **GET LUCKY - ET**

NEW GENERATION
GENETICS

516556

\$28

Huray x Wonderment x Prestige

01/11/2014

Sire: Huray

Dam: Harts Lady Lust-ET 'E 90 E 90 MS'

MGD: Bail-Mik P Lady Liberty-ET 'E 91 E 91 MS'

aAa: 351

G-CDCB PERFORMANCE DECEMBER 2016

REL 60%

MILK _{kgs}	FAT _{kgs}	FAT%
2013	61	-0.09
PROT _{kgs}	PROT%	TYPE
56	-0.05	0.60



HEALTH & FITNESS

CONCEPTION	2.50
SOMATIC CELL	3.15
UDDER COMPOSITE	0.18



GET LUCKY

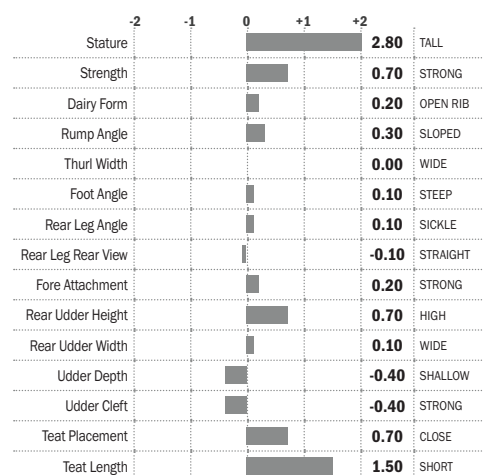


Type
Protein
Fertility
Longevity
Feet & Legs



SEXED SEMEN
\$POA

Genomic Sire



Superbrown **ARROW**



SEXED SEMEN
\$POA



516587

\$28

Anibal x Zaster x Sesam

22/07/2014

Sire: Scharz Bs Vigor Anibal

Dam: Belinda Wec B2c

2Nd Dam: Bruna Wec B2c

MILK _{kgs}	FAT _{kgs}	FAT%
748	36	0.06
PROT _{kgs}	PROT%	Final Score
42	0.20	126



HEALTH & FITNESS

LONGEVITY	118
MILKING SPEED	105
CELLS	115

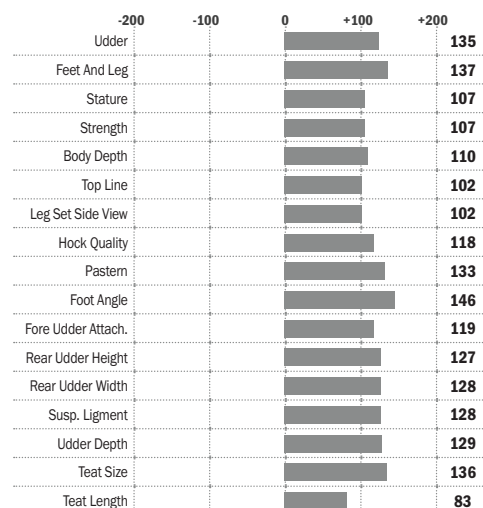


ARROW



Udder
Type
Feet & Legs
Outcross

Genomic Sire OUTCROSS





515598

\$20

HUARD

Appollo JB x Triomphe

03/10/2012

Sire: Apollo JB

Dam: Fable



HUARD JB

DECEMBER 2016 | 0 DTRS | 0 HERDS | REL 72%

MILK _{kgs}	FAT _{kgs}	FAT%	
843	24	-1.4	
PROT _{kgs}	PROT%	REL%	TYPE
34	0	95	111

	80	90	100	110	120	
Stature					106	TALL
Chest Width					106	WIDE
Body Depth					100	DEEP
Rump Angle					116	LOW PINS
Rump Width					112	WIDE
Rear Leg Set					95	SICKLE
Foot Angle					101	STEEP
Fore Udder Attach.					116	TIGHT
Rear Udder Width					93	HIGH
Udder Cleft					111	STRONG
Udder Depth					106	SHALLOW
Front Teat Placement					117	CLOSE



HEALTH & FITNESS

FERTILITY INDEX	0.1
MILKING SPEED	107
CALVING EASE	87
TEMPERAMENT	104
SOMATIC CELL	-0.3
LONGEVITY	0.1



Udders
Type
Protein
Temperament
Calving Ease



516612

\$20

Genomic Sire

JOMBRIK

Hombrik JB x Funky JB

27/09/2014

Sire: Hombrik

Dam: Holding

aAa: 165243



JOMBRIK JB

DECEMBER 2016 | 0 DTRS | 0 HERDS | REL 68%

MILK _{kgs}	FAT _{kgs}	FAT%	
791	25	-1.1	
PROT _{kgs}	PROT%	REL%	TYPE
28	-0.3	68	121

	80	90	100	110	120	
Stature					110	TALL
Chest Width					101	WIDE
Body Depth					119	DEEP
Rump Angle					98	LOW PINS
Rump Width					111	WIDE
Rear Leg Set					94	SICKLE
Foot Angle					108	STEEP
Fore Udder Attach.					117	TIGHT
Rear Udder Width					118	HIGH
Udder Cleft					105	STRONG
Udder Depth					105	SHALLOW
Front Teat Placement					117	CLOSE



HEALTH & FITNESS

FERTILITY INDEX	0.5
MILKING SPEED	120
CALVING EASE	89
TEMPERAMENT	112
SOMATIC CELL	0.1
LONGEVITY	0.6



Capacity
Type
Udders
Milking Speed
Temperament

SUPPLEMENTARY DAIRY SIRE LIST 2017

All prices are GST exclusive

AYRSHIRE SIRES

		aAa	A2	\$	PACK
510580	Legace Motown			\$10.00	
513566	Palmyra Raven Benevola	651423		\$20.00	
509586	Broadlea Sakics Anton			\$10.00	
514577	Palmyra Burdette LH Rondo ET			\$18.00	
515561	Tristar Platinum	153		\$18.00	
511594	Geelunga Modern Bom			\$12.00	

BROWN SWISS SIRES

514690	Cutting Edge Austin			\$20.00	
507596	Sun-Made Vigor	165324		\$28.00	
506626	Rollingview Denver			\$28.00	
510645	RNR Payoff Brookings	642513		\$28.00	
513589	Lavage Zeus Vino Zephir (Sexed)			\$85.00	
516588	Hadrian (g)			\$28.00	

SHORTHORN SIRES

512567	Fairway			\$30.00	
512566	Twells Barington Grange 5th			\$28.00	
513587	Glanhirwen Prince			\$28.00	
511587	Strickley True Perfection			\$28.00	
506632	Panorama Royal Treble			\$18.00	
517691	Rovin Bolero Exp	516342	A2A2	\$25.00	

NORMANDE SIRES

516614	Aubray		A2A2	\$20.00	
500544	Ignorantin			\$15.00	

SWEDISH RED SIRE

510638	Skyhigh Hartland			\$18.00	
--------	------------------	--	--	---------	--

AUSSIE RED

513549	Bosgowan Bonjovi	516324	A2A2	\$18.00	\$8.00
--------	------------------	--------	------	---------	--------

MILKING FLECHVIEH

516618	BFG Samland			\$28.00	
516619	Walfried			\$35.00	

MONTBELIARDE

513635	Crumble	543126		\$20.00	
513634	Valfin		A2A2	\$20.00	
714102	Hombrik			\$20.00	
515597	Esprit			\$20.00	
515596	Funky			\$20.00	

BUDGET SEMEN available from \$5 - \$10

For more semen please refer to our website
www.geneticenterprises.co.nz



- Alerts farmers approximately one hour prior to calving
- Suits all cattle breeds – attaches to the tail
- Accurate in over 95% of calvings
- Rechargeable battery, LED status indicator
- Texts up to two phone numbers & up to three emails, works anywhere in the world with GSM signal



More details on the website and price POA

www.moocall.com

CONDITIONS OF SALE

1. Supplies of semen are subject to availability and all prices quoted do not include GST.
2. While every effort is taken to ensure the supply of high quality products, no guarantee can be given to product quality.
3. Genetic Enterprises Ltd (hereafter called GE-NZ 2008 Ltd) liability on any claim whether in negligence or any other sort of contract or otherwise with respect to products delivered hereunder shall not exceed the purchase price of the product sold, or GE-NZ Ltd shall so elect, the buyer shall be entitled only to replacement of product. In no event shall GE-NZ Ltd be liable for the buyers incidental or consequential damages.

INTELLECTUAL PROPERTY:

GE Ltd considers INTELLECTUAL PROPERTY RIGHTS on male and female first generation progeny to be restrictive in the future promotion of all breeds in New Zealand. As a condition of sale of semen or any other form of Germplasm, whether purchased directly from GE-NZ Ltd or acquired indirectly from another source, GE-NZ Ltd sired progeny are free to be sold or transferred to new ownership and any such transfer or sale will be free of any INTELLECTUAL PROPERTY RIGHTS whatsoever. No restraints are to apply to any GE-NZ Ltd sired progeny, male or female.

DISCLAIMER:

Although customers have gained a high degree of success in the use of the supplier's products, GE-NZ Ltd give no warranty whatsoever as to the description, quality or productiveness or the results which may be obtained in the use of its products. The suppliers warrant that they have good title to the products sold.

PAYMENT:

Prices can change without notice. Payment is to be made by 20th of month after delivery or as arranged with GE-NZ Ltd. The customer acknowledges and agrees: that ownership of the product remains with GE-NZ Ltd; and that it has possession of the product on trust for GE-NZ Ltd, and it will store the product separately from similar product, until ALL amounts owing for any product or services supplied by GE-NZ Ltd to the customer have been paid in full. The customer is liable for any debt collection costs incurred. The customer further agrees that should the customer use the product before paying all amounts outstanding to GE-NZ Ltd that the resultant pregnancy and/or calf shall be owned by GE-NZ Ltd.

CONDITIONS OF BAILMENT:

Receipt by GE-NZ Ltd of all goods is on the express understanding that GE-NZ Ltd shall not be under any liability whatsoever for any loss, damage or destruction (or misdelivery), whether due to any negligence or wilful default by GE-NZ Ltd or any of its servants or not. If any of these terms are unacceptable, goods deposited should be immediately uplifted and failure to do so will be deemed to constitute acceptance of these items. As GE-NZ Ltd do not cover insurance for loss damage, destruction or misdelivery of goods held on BAILMENT, responsibility for all said insurance is that of the owner and is at the owners risk. This includes semen stored, or stored for sale on behalf of the owner.



GENETIC ENTERPRISES
WORLD CLASS GENETICS **NZ**



GENETIC ENTERPRISES LTD

Andy McKay	Papamoa	General Manager	acmckay@yahoo.com	M: 0223 529 781
Allen Donald	Cambridge	Managing Director	genetent@gmail.com	M: 0274 787 173 Toll Free 0800 357 164
Gary Falkner	Hamilton	Sales Consultant - Northland, Waikato & Taranaki	gfalkner9@gmail.com	M: 0275 292 898 Toll Free 0800 529 290
Philip Wilson	Feilding	Sales Consultant - Manawatu, Wairarapa, Hawkes Bay	philiptodwilson@gmail.com	M: 0274 498 025
Gerald Emming	Ashburton	Sales Consultant - Canterbury, Westcoast	geraldemming@gmail.com	M: 027 631 9373
Steve Brooking	Southland	Sales Consultant - Southland, Otago	brooking.steve@yahoo.co.nz	M: 027 884 8089
Selwyn Donald	Featherston	Product Manager - Dairy	sdonald@clear.net.nz	M: 027 4378 5375
Jean Macky	Te Awamutu	Despatch Manager	jd.macky@xtra.co.nz	M: 0274 966 299 Toll Free 0800 582 063
Louise Moore	Cambridge	Accounts Manager	genetent@gmail.com	Phone 07 827 5173 Toll Free 0800 357 164
Lyn Goodall	Hamilton	Product & Imports Manager	genetent@gmail.com	M: 0274 845 494

DAIRY BREEDING CONSULTANTS

NORTH ISLAND

Northland	Jean Macky	Northland	Phone 07 872 1744	Mobile 0274 966 299
Bay of Plenty / Rotorua	Doug Lambert	Rotorua	Phone 07 357 2996	Mobile 0272 744 861
Bay of Plenty	Robert Cleland	Whakatane	Phone 07 308 8554	Mobile 0211 709 159
Taranaki	Ian McCormick	Stratford	Phone 06 765 0399	Mobile 0274 705 405
Northland / Waikato / Taranaki	Gary Falkner	Hamilton	Phone 0800 529 290	Mobile 0275 292 898
Wairarapa / Hawkes Bay	Selwyn Donald	Featherston	Phone 06 308 9942	Mobile 0274 378 375
	Peter Matthews	Masterton	Phone 06 377 3853	
			Enquiries 0800 357 164	

SOUTH ISLAND

Marlborough / Nelson	Gerald Emming	Ashburton		Mobile 027 631 9373
North Otago	Hugh Davidson	Oamaru		Mobile 0272 266 568
Southland - Otago	Steve Brooking	Invercargill		Mobile 027 884 8089
	John & Lucy van Vliet	Balfour		Mobile 0276 987 633

BEEF BREEDING CONSULTANTS

Philip Wilson	Feilding	Toll Free 0800 357 164	Mobile 0274 498 025
Allen Donald			Mobile 0274 787 173



GENETIC ENTERPRISES
WORLD CLASS GENETICS **NZ**

BRAND NEW AI BANKS AVAILABLE

If your bank is 20 years or older it may be time for an up-grade. We trade in.

ALL AI TECHNICIANS AND DIY OPERATORS

- 5 year vacuum guarantee on all models
 - Straw capacity 1700 on all models
 - Static holding time 89 to 190 days depending on model
 - Working time 65 to 160 days depending on model
 - Inner vessel support for extra strength on the B series
 - Letheroid protective outside cover supplied on all models
 - Larger models available on request
- Models YDS-10, YDS-16 are designed for DIY technicians with bank on farm.

We have a large selection of second hand tanks available in a selection of sizes at very competitive prices.



GENETIC ENTERPRISES

WORLD CLASS GENETICS

NZ



FOLLOW US ON [FACEBOOK.COM/GENETIC ENTERPRISES](https://www.facebook.com/geneticenterprises)

Genetic Enterprises NZ
PO Box 1084, Cambridge 3450
49 Shakespeare Street, Leamington, Cambridge
Phone: 0800 357 164