

# aAa® Quick Start Guide



## Are you experiencing any of the following?

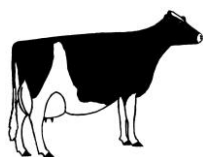
- Culling too many young cows because of poor udders, production, fertility, lameness, high cell counts, temperament or calving problems?
- Using the best bulls and producing disappointing daughters?
- Seeing your cows becoming increasingly frail and less functional?

## If you answered yes to any of the above, aAa® Animal Analysis can help you:

- ✓ Identify the *cause* of your cow's problems.
- ✓ Determine what the bulls you select *must* bring to breed a more balanced and functional herd.

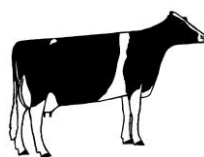
## How does aAa® work?

A dairy cow's *form* is made up of many body parts that work together to keep her alive and producing. Her structural *form* determines her *functional* capability to milk well, convert feed efficiently, calve easily, stay healthy, be durable and compete in a herd environment. aAa® approved analysers study the way a dairy cow's body parts are formed, they identify the cow's problems and determine which aAa® numbers a bull must bring to a mating to correct these problems and improve the *form and function* of the next generation. The six aAa® numbers and some of their important functions are shown below:



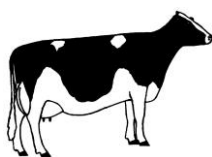
### 1 - Dairy

Feminine will to milk & more milk for size



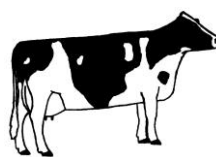
### 2 - Tall

High, elastic udder for modern milking



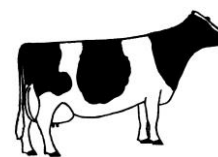
### 3 - Open

Space in pelvis for udder, calving & longer breeding life



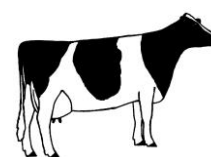
### 4 - Strong

Room for heart & lungs; healthy udder, feet & legs



### 5 - Smooth

Better appetite, greater capacity to eat & drink



### 6 - Style

Durable bones, blending of parts & attentive character

**aAa® numbers are shown from left to right:**

**for a cow in the order she needs them, and for a bull in the order he sires them.**

**For best results select bulls that *closely match* the aAa® numbers of your cows.**

Each aAa® number plays an important role in a cow's structural form. The best functioning cows have a balance of all six aAa® numbers. Balanced cows live longer, more productive and more profitable lives. Balanced herds are more uniform and easier to manage.

## Using aAa® Animal Analysis in your herd is as easy as 1-2-3:

1. Have your cows analysed by an aAa® approved analyser. aAa® analysers are independent and trained in the aAa® Animal Analysis method. They are NOT affiliated with any AI company or semen marketing organization.
2. Choose a bull team that meets your breeding goals and closely match the aAa® numbers of your cows.
3. Enter your bull team into aAa® Perfect Match (a free service available for aAa® customers). You will then have a printable list of the best mating options for every cow that has been analysed. This makes mating time simple and efficient.

For more information and resources visit:  
[www.aAaWeeks.com](http://www.aAaWeeks.com)

To contact aAa® Approved Analyser Tracey Zimmerman:  
Email: [T.Zimmerman@aAaWeeks.com](mailto:T.Zimmerman@aAaWeeks.com)  
Ph: 027 360 6015



**Animal Analysis Associates –  
New Zealand and Australia**